

District Heating Pumps for HOFOR Kløvermarken

HOFOR Kløvermarken meets 99% of the demand for heating in Copenhagen and had new and bigger pumps installed in 2015

DESMI provided HOFOR Kløvermarken with six DSL400-495 pumps in 2015. The pumps replaced the existing pumps that could not keep pace with the increased demand for heating. The pumps were installed in 2015 and have performed well ever since.



JOB REPORT



The increased demand for heating necessitated construction and redesign of the pumping station, thus improving the heating supply for Amager that HOFOR is responsible for.

The project made it possible to provide the town centre with heating via a planned crossing of the harbour between Islands Brygge and Bernstorffsgade. The upgrade has furthermore improved the reliability of supply and made long-distance delivery of cheap heating possible.

Bjarne Gislason, project manager at HOFOR, says: *"The pumps were chosen based on an overall evaluation. The project progressed without problems, and DESMI has been very flexible and co-operative during the entire process. The pumps have so far been running satisfactorily"*.

Pumping station HOFOR Kløvermarken was built and put into operation in 1985 and the pumps provide the entire Amager with heating.

The pumps are among the biggest in the DESMI DSL series. Each pump has a capacity of 2600 m³/h at a pressure of 4.7 bar. They are driven by 450 kW motors.



PROVEN TECHNOLOGY

DESMI

MARINE & OFFSHORE

INDUSTRY

OIL SPILL RESPONSE

DEFENCE & FUEL

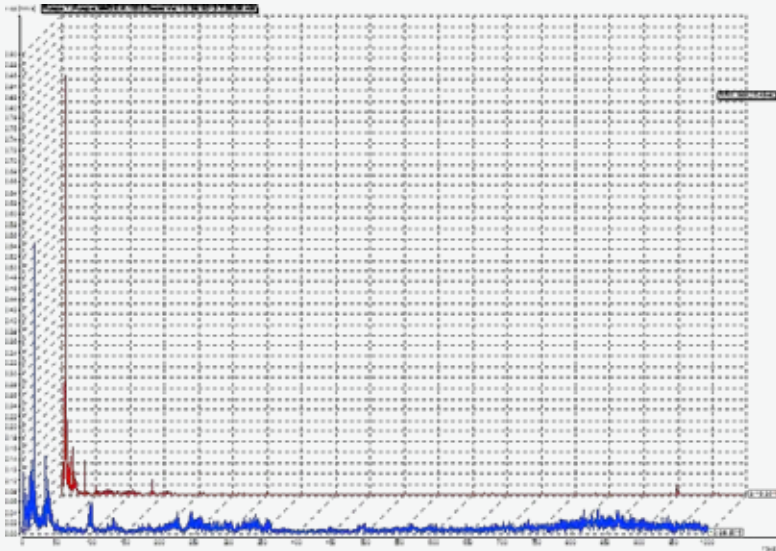
UTILITY

HOFOR Kløvermarken

Vibration Test

In connection with the installation of the new pumps, DESMI service engineers made a vibration test of the pumps. DESMI uses the results of the test to form a

clear picture of the installation, which can be used later for fault-finding, operational analysis and optimisation.



The "Y-axis" shows the energy in the vibrations. The "X-axis" indicates e.g. the frequencies of the rotating elements. The vibration measurements on the pump shown were between 0.53 mm/s and 0.79 mm/s.

The vibration speed 2.8 mm/s (y-axis) is the limit that DESMI uses as max. vibration speed for newly installed pumps.

The vibration limit is from ISO standard 10816-3.



PROVEN TECHNOLOGY

DESMI

MARINE & OFFSHORE

INDUSTRY

OIL SPILL RESPONSE

DEFENCE & FUEL

UTILITY