

Motor Assembly Instructions

ROTAN® GP Units



The ROTAN® GP Series includes a feature that allows adjustment of internal operating clearances. This is a simple procedure and can be accomplished while referring to the assembly drawing. (Figure 3)

The unit includes the Pump Head, Bracket, Coupling assembly, and Motor. The internal pump clearances must be set.

With the pump positioned in the bracket and into the coupling assembly, the four bolts located in the set ring (item CC) are used to adjust the clearance.

Two of the bolts are threaded into the set ring and push off of the coupling and the other two bolts are threaded into the coupling and pull.

The set screw (item DC) must be loosened prior to the adjusting procedure.

To set the clearance, first loosen the puller bolts (items KY) that are threaded into the pump coupling (item DB).

Next evenly tighten the pusher bolts (item KX) while turning the coupling by hand.

When a slight drag is felt the rotor gear inside the pump casing touches the front cover as seen in figure 2.

At this point snug the puller bolts (KY) together. The gear clearance is now closed (no clearance).

To set the clearance, loosen the pusher bolts (KX) in accordance with chart one (1) in degree angle (figure 1) and then evenly tighten the puller bolts.

Both sets of bolts are now evenly tightened and clearance is set. Be sure that the set screw (item DC) is tightened and that the pump turns freely by hand. Clearance is now set and long term performance may be expected.

Over the course of time should pressure/flow deteriorate the procedure may be repeated to improve performance.

Factory support is available should problems or questions occur.

Motor Assembly Instructions ROTAN GP Units

Figure 1.

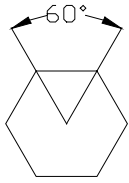


Figure 1: Angle for a single flat on the hexagonal bolt head on the adjusting screws (KX) and (KY).

Figure 2:

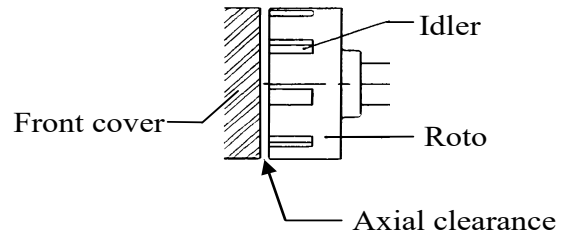
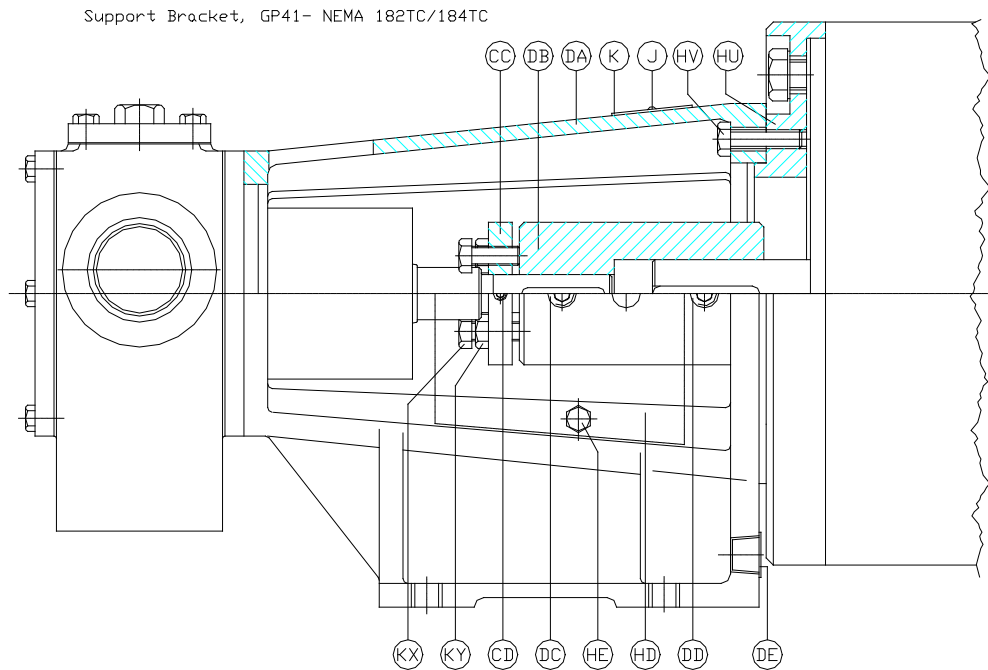


Figure 3:



Note: Some larger pumps have two each item DC and DD.

Min./Max angle change in degrees of the adjusting screws					
Pump Type	Execution		26/33	44	51/66
GP	Standard	Min	36°	29°	43°
		Max	45°	43°	58°