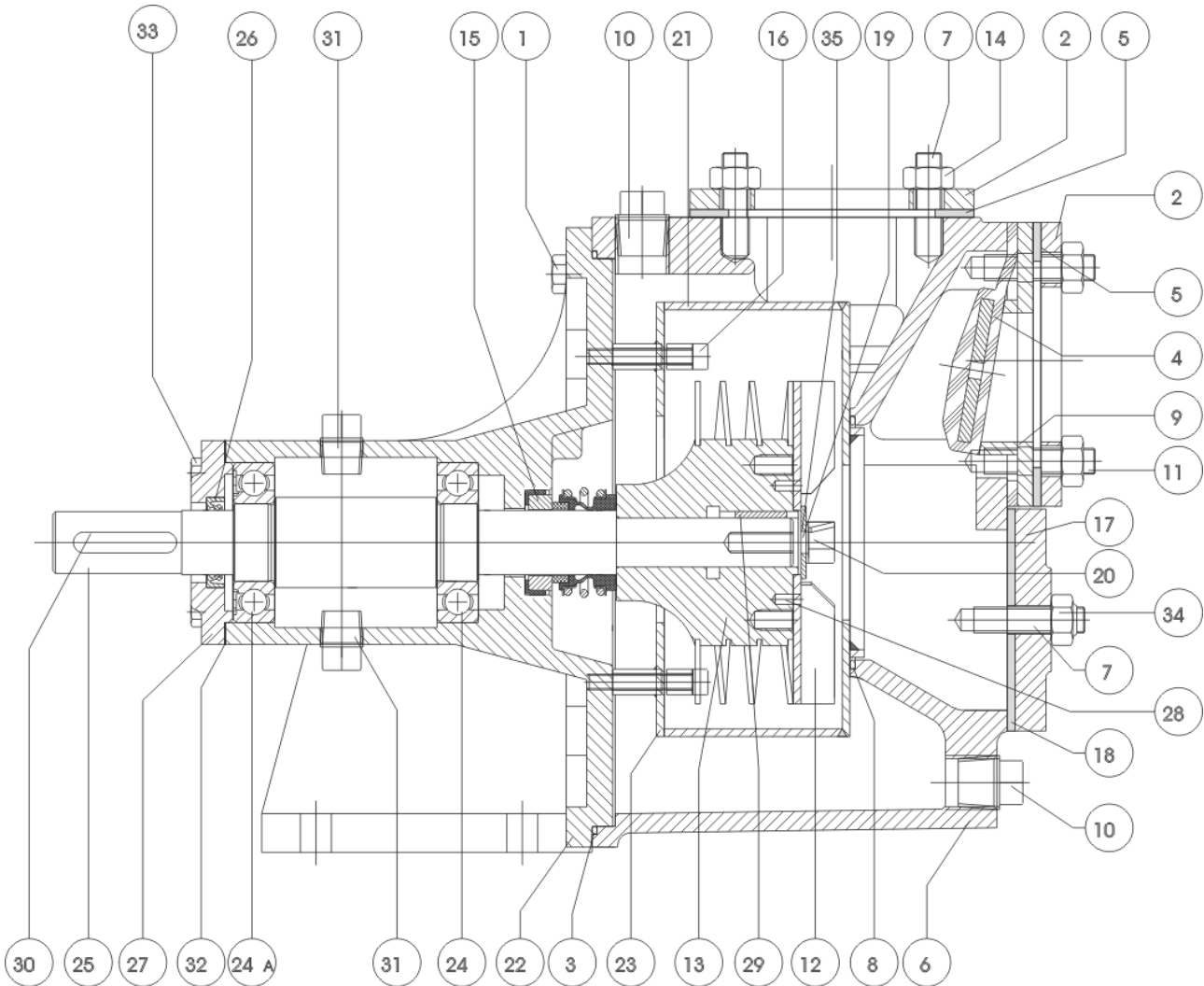


15. ASSEMBLY DRAWING



16. SPARE PARTS LIST

| Pos. No. | Description | Qty. | Item No. |
|----------|-----------------------------|------|----------|
| 01 | Allen screw M8x25 | 6 | 705254 |
| 02 | Counter flange | 2 | 190534 |
| 03 | O-ring | 1 | 710952 |
| 04 | Check valve | 1 | 190543 |
| 05 | Flange gasket | 2 | 190542 |
| 06 | Pump casing | 1 | 590790 |
| 07 | Stud M10x25 A4 | 6 | 700218 |
| 08 | O-ring | 1 | 710953 |
| 09 | Seat for check valve | 1 | 590800 |
| 10 | Filling and drain plug 1/2" | 2 | 705020 |
| 11 | Stud M10x30 A4 | 4 | 700219 |
| 12 | Impeller | 1 | 190535 |
| 13 | Rotor | 1 | 190537 |
| 14 | Nut M10 | 8 | 704012 |
| 15 | Shaft seal | 1 | 710949 |
| 16 | Allen screw M6x40 | 4 | 704180 |
| 17 | Inspection cover | 1 | 590810 |
| 18 | Gasket for inspection cover | 1 | 190541 |
| 19 | Disc M8 | 1 | 710954 |
| 20 | Allen screw M8x20 A4 | 1 | 704367 |
| 21 | Rotor housing | 1 | 190538 |
| 22 | Bearing bracket | 1 | 590840 |
| 23 | Rear plate | 1 | 190536 |
| 24 | Ball bearing 6206 | 1 | 700982 |
| 24A | Ball bearing 6206 1RS | 1 | 702387 |
| 25 | Shaft | 1 | 590820 |
| 26 | Oil sealing ring | 1 | 700835 |
| 27 | Bearing cover | 1 | 590830 |
| 28 | Guide pin \varnothing 4x8 | 2 | 706284 |
| 29 | Key for rotor | 1 | 700012 |
| 30 | Key for shaft | 1 | 700899 |
| 31 | Filling and drain plug 3/8" | 2 | 2037505 |
| 32 | Paper gasket | 1 | 190544 |
| 33 | Stud M6x20 | 4 | 706287 |
| 34 | Nut Nyloc M10 | 2 | 703135 |
| 35 | Lock washer M8 | 1 | 710948 |