

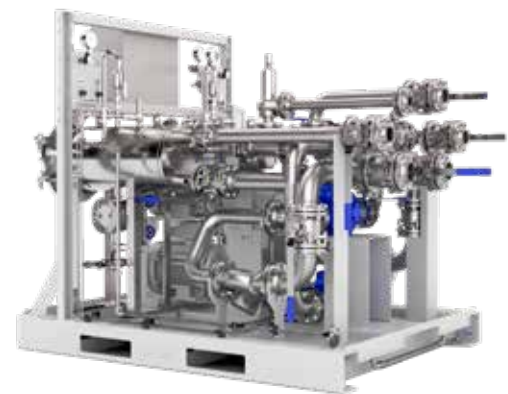
DES 150 P&F – DES 180 P&F

The pump & filtration modules DES 150 P&F – DES 180 P&F are single pipeline service systems.

The modules are capable of pumping filtered dry/clean and unfiltered JP-5 (F-44) fuel to required destinations.

Following modules are available:

- DES 150 P&F
- DES 165 P&F
- DES 180 P&F



The modules can either be built according to DNV GL (RU-SHIP), ABS or Lloyd's Register rules. The system consists generally of the following main components:

- 1 x Electrical motor: 11 kW, 15 kW, 18 kW
- 1 x Vane pump
- 1 x Y - strainer
- 1 x Pressure relief valve
- 1 x Filter water separator (FWS). Includes filtration elements in compliance with EI 1581 6th Edition, Category M, Type S.
- 1 x Filter control panel (FCP) with 12" HMI touch display
- Multiple valves
- Instrumentation based on DESMI recommendations
- 1 x Base frame with integrated drip tray

DES 150 P&F - DES 180 P&F

Technical Data:

Flow rates:

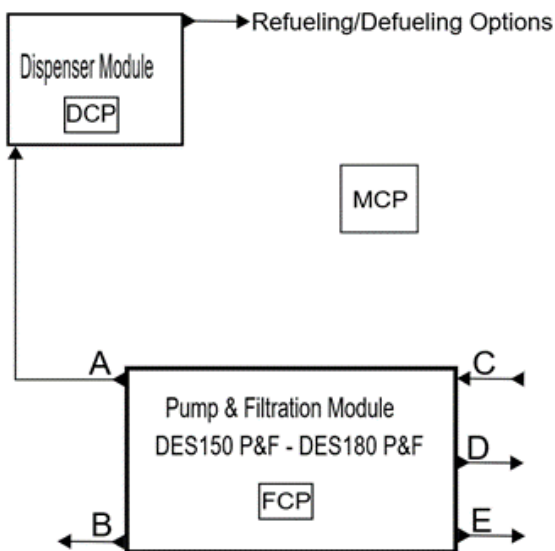
Fuel Media:	JP-5 Fuel (NATO Code F-44)
Temperature Range:	Internal Compartment Range 0 - 48 °C
Working Pressure:	8,5 bar
EX-Protection Area:	Zone II

- DES 150 P&F, Flow rate:
150 - 230 L/min, Main size: DN 50
- DES 165 P&F, Flow rate:
250 - 380 L/min, Main size: DN 65
- DES 180 P&F, Flow rate:
380 - 680 L/min, Main size: DN 80

Dimensions & weights:

- DES 150 P&F: Dimensions:
H x L x W = 1736 x 1806 x 1160
Weight = 1085 kg
- DES 165 P&F: Dimensions:
H x L x W = 1850 x 1800 x 1189
Weight = 1215 kg
- DES 180 P&F: Dimensions:
H x L x W = 1850 x 2000 x 1216
Weight = 1632 kg

Flow Chart:



Interfaces of Pump & Filtration Module

- A: Outlet aviation fuel service
- B: Outlet without filtration
- C: Inlet aviation fuel service
- D: Pressure relief valve return to tank
- E: Drain & overflow of FWS