

DESMI Group

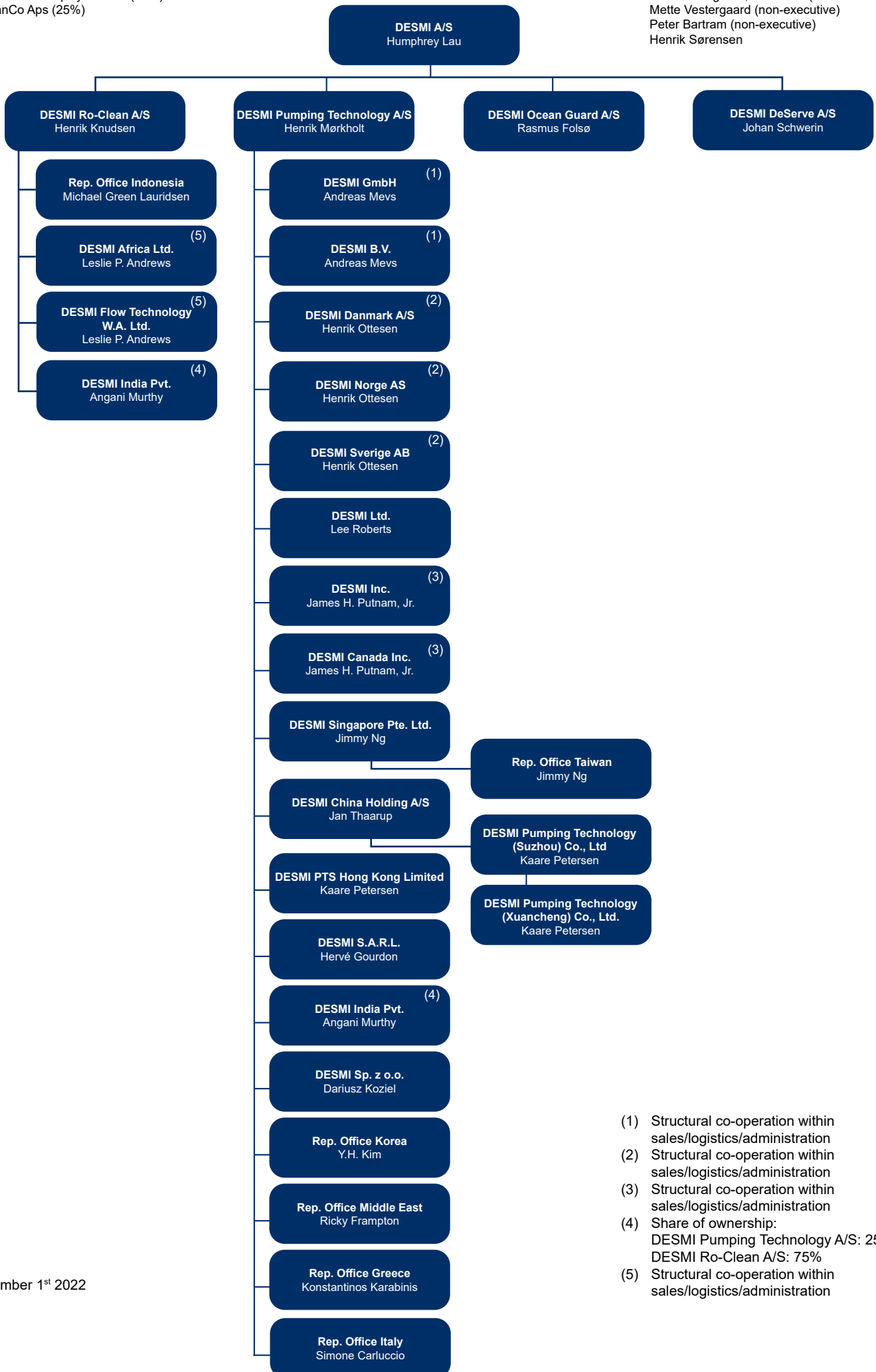
Wholly owned companies unless otherwise stated

Shareholders:

OEP - One Equity Partner (75%)
ManCo Aps (25%)

Board of Directors:

Poul Knudsgaard, Chairman (non-executive)
Mette Vestergaard (non-executive)
Peter Bartram (non-executive)
Henrik Sørensen



- (1) Structural co-operation within sales/logistics/administration
- (2) Structural co-operation within sales/logistics/administration
- (3) Structural co-operation within sales/logistics/administration
- (4) Share of ownership:
DESMI Pumping Technology A/S: 25%
DESMI Ro-Clean A/S: 75%
- (5) Structural co-operation within sales/logistics/administration