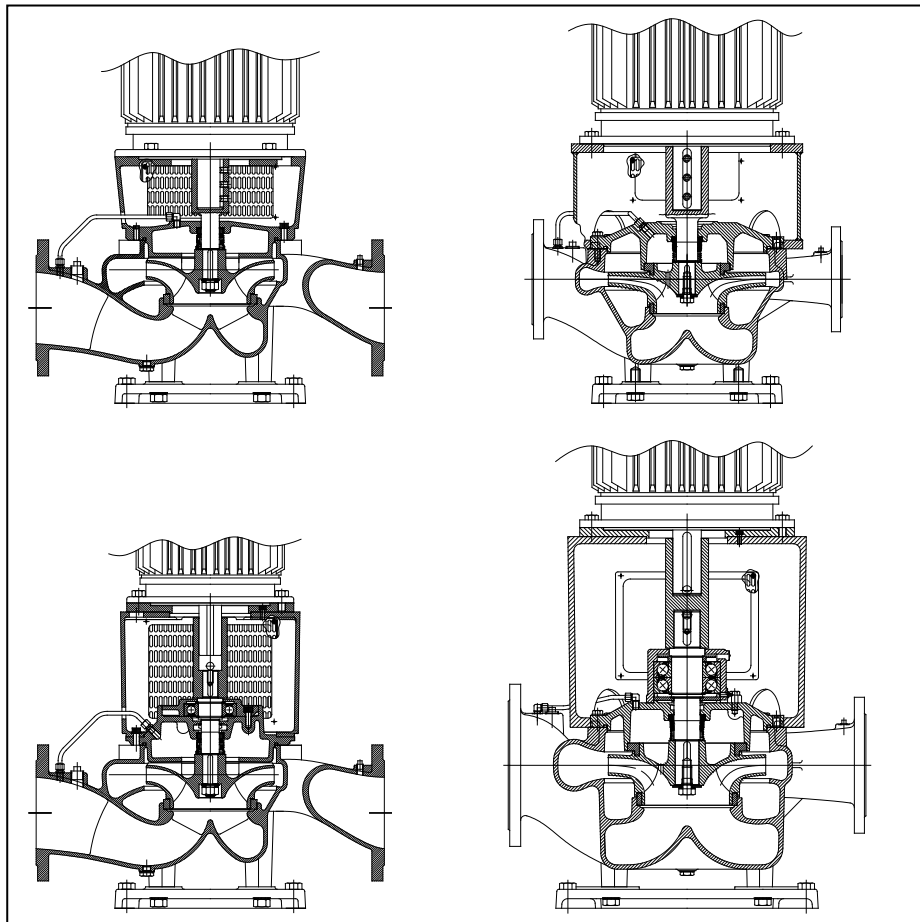


OPERATION AND MAINTENANCE INSTRUCTIONS

DESMI vertical "in-line" centrifugal pump NSL Monobloc



DESMI A/S

Tagholm I, DK-9400 Nørresundby, Denmark

Tel.: +45 96 32 81 11

Fax: +45 98 17 54 99

E-mail: desmi@desmi.com

Internet: www.desmi.com

Manual: T1380	Language: English	Revision: R (01/12)
------------------	----------------------	------------------------

Special pump No.

PAGE
1. PRODUCT DESCRIPTION	3
1.1 DELIVERY.....	3
2. TECHNICAL DATA.....	3
2.1 EXPLANATION OF THE TYPE NUMBER	3
2.2 TECHNICAL DESCRIPTION.....	4
3. INSTALLATION	6
3.1 MOUNTING/FASTENING.....	6
3.2 WIRING.....	6
4. TRANSPORT/STORAGE.....	6
5. DISMANTLING	7
5.1 ACCESS TO IMPELLER	7
5.2 DISMANTLING SHAFT SEAL	8
5.3 DISMANTLING SEAT	8
5.4 DISMANTLING BEARING (ONLY 02-COMBINATION).....	8
5.5 INSPECTION	8
5.6 DISMANTLING COUPLING (02-COMBINATION) / SHAFT (12-COMBINATION)	8
6. ASSEMBLING	9
6.1 FITTING SEALING RINGS.....	9
6.2 FITTING BEARING (ONLY 02-COMBINATION)	9
6.3 FITTING WATER DEFLECTOR (ONLY 02-COMBINATION)	9
6.4 FITTING SHAFT SEAL	9
6.5 FITTING IMPELLER	10
6.6 FITTING SHAFT SEAL COVER OR MOTOR BRACKET (12-COMBINATION).....	10
6.7 SHAFT.....	10
6.8 FITTING COUPLING (ONLY 02-COMBINATION).....	11
7. FROST PROTECTION.....	11
8. DISMANTLING	11
9. START-UP.....	11
9.1 START-UP	11
10. SYSTEM BALANCING	12
11. INSPECTION AND MAINTENANCE	13
11.1 DRAINING THE PUMP.....	13
11.2 BEARING	13
12. REPAIRS.....	14
12.1 ORDERING SPARE PARTS	14
13. OPERATING DATA.....	15
14. EU DECLARATION OF CONFORMITY	17
15. ASSEMBLY DRAWING ø215/265 02-comb.....	17
16. SPARE PARTS LIST ø215/265 02-comb.....	18
15A. ASSEMBLY DRAWING ø215/265 02-comb.....	19
16A. SPARE PARTS LIST	19
NSLV in ø215/265 02-comb.....	19
17. ASSEMBLY DRAWING ø215/265 12-comb.....	20
18. SPARE PARTS LIST ø215/265 12-comb.....	20
19. ASSY. DRAWING ø330/415/525 02-comb.	21
20. SPARE PARTS LIST ø330/415/525 02-comb.....	21
21. ASSY. DRAWING ø330/415/525 12-comb.	22
22. SPARE PARTS LIST ø330/415/525 12-comb.....	22
23. DIMENSIONAL SKETCH ø215/265 02-combination	23
24. DIMENSIONAL SKETCH ø215/265 12-combination	24
25. DIMENSIONAL SKETCH ø330/415/525 02-combination	25
26. DIMENSIONAL SKETCH ø330/415/525 12-combination	27

1. PRODUCT DESCRIPTION

These operation and maintenance instructions apply to the DESMI NSL Monobloc pump.

The pump is a single-stage vertical "in-line" centrifugal pump (i.e. horizontal inlet and outlet on the same line) equipped with stainless steel shaft, mechanical shaft seal, and closed impeller.

The pump is suitable for the pumping of liquids with temperatures up to 80°C. With special shaft seal up to 100°C in Monobloc pumps with bearing (/ -02 design) and up to 140°C in Monobloc pumps without bearing (/ -12 design). For pumping of liquids with temperatures above 100°C DESMI recommends using nothing but ductile iron (for instance GGG40) for pump casing and rear cover. Max. working pressure and number of revolutions are indicated under Operating Data.

The pump is particularly suitable for the pumping of water in connection with cooling systems, cooling of diesel engines, as bilge pumps, ballast pumps, fire pumps, brine pumps, pumps for irrigation, fish farms, water works, district heating, salvage corps, army and navy, etc.

The descriptions in the operation and maintenance instructions are divided into two parts covering the groups **ø215/265** and **ø330/415/525**, as the designs of these two groups are different. The numbers refer to the standard impeller diameter of the pump. E.g.:

ø215/265: Pumps with ø215 or ø265 impellers:

The back of the impeller is equipped with relief blades to reduce the load on the bearings. The line through inlet and outlet is flush with the centre line of the shaft.

ø330/415/525: Pumps with ø330, ø415 or ø525 impellers:

The back and the front of the impeller are equipped with sealing rings and relief holes to reduce the load on the bearings. The pump inlet and outlet are tangential i.e. the line through inlet and outlet is offset in relation to the centre line of the shaft.

1.1 DELIVERY

- Check on delivery that the shipment is complete and undamaged.
- Defects and damages, if any, to be reported to the carrier and the supplier immediately in order that a claim can be advanced.

2. TECHNICAL DATA

The pumps are manufactured in various material combinations which appear from the type number on the name plate. See below.

2.1 EXPLANATION OF THE TYPE NUMBER

All the NSL pumps are provided with a name plate. The type number indicated on the name plate is built up as follows:

NSLXXX-YYY-MR-Z

XXX: Pressure branch diameter, YYY: Standard impeller diameter

M: The material combination of the pump.

R: The assembly combination of the pump.

Z: Other variants

M may be the following:

- A: Casing and shaft seal cover : Cast iron + cast iron alloy. Impeller and sealing rings: Bronze
- B: Casing and shaft seal cover : Cast iron + cast iron alloy. Impeller and sealing rings: Stainless.
- C: All cast iron
- D: Casing and shaft seal cover: Bronze. Impeller and sealing rings: NiAlBz
- E: Special materials
- U: Nonmagnetic material

The pumps can be delivered in other material combinations according to agreement with the supplier.

R may be the following:

- 02: Monobloc, with bearing in the pump
- 12: Monobloc, without bearing in the pump
- 13: Spacer, light bearing housing
- 14: Spacer, heavy bearing housing
- 15: Spacer, heavy bearing housing and heavy motor bracket (special motor bracket)

Z may be the following:

- i : PN16 flanges
- j : PN25 flanges
- k : Special flange
- l : Other stuffing box
- m : BS flanges
- n : ANSI flanges
- o : Shockproof design
- p : Other design
- q : JIS flanges

Any use of the pump is to be evaluated on the basis of the materials used in the pump. In case of doubt, contact the supplier.

Pumps in material combinations A and C are primarily used for fresh water.

Pumps in material combination D are primarily used for seawater.

If the pumps are designed for special purposes the following is to be indicated:

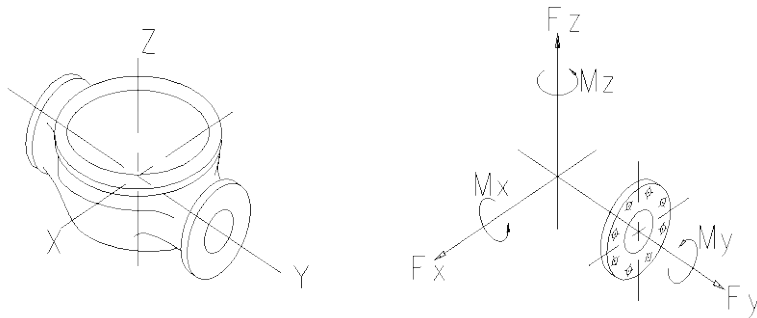
Pump No. :
Pump type :
Application :
Comment :

2.2 TECHNICAL DESCRIPTION

The noise level indicated is the airborne noise including the motor. The noise depends on the motor type supplied, as the noise from the pump can be calculated as the noise level of the motor + 2dB(A). The noise level is for pumps with electric motors.

The capacity of the pump appears from the name plate on the pump. If the pump has been delivered without motor, the pump capacity is to be indicated on the plate when mounting the motor.

The permissible loads on the flanges appear from the following table. The values apply to standard pumps in bronze (Rg5) and cast iron (GG20). As to pumps in SG iron (GGG40) the values are to be increased by factor 1.5.



Pump	F _y N	F _z N	F _x N	ΣF	M _y Nm	M _z Nm	M _x Nm	Σ M _t
NSL80-215 NSL80-265 NSL80-330	800	950	850	1500	550	350	400	750
NSL100-215 NSL100-265 NSL100-330 NSL100-415	1000	1250	1150	2000	650	400	500	900
NSL125-215 NSL125-265 NSL125-330 NSL125-415	1250	1600	1430	2500	830	520	650	1160
NSL150-215 NSL150-265 NSL150-330 NSL150-415	1500	1900	1700	2950	1000	650	800	1400
NSL200-265 NSL200-330 NSL200-415 NSL200-525	2000	2520	2260	3920	1330	860	1060	1860
NSL250-265 NSL250-330 NSL250-415 NSL250-525	2500	3150	2820	4900	1770	1140	1400	2470
NSL300-415 NSL300-525	3000	3750	3350	5860	2750	1900	2200	4000

In connection with the permissible loads on the flanges the following is to be observed:

$$\left(\frac{\sum F_{calc}}{\sum F} \right)^2 + \left(\frac{\sum M_{calc}}{\sum M_t} \right)^2 < 2$$

where index "calc" is the values calculated by the user.

At the same time none of the forces or moments may exceed the indicated figure multiplied by 1.4.

3. INSTALLATION

3.1 MOUNTING/FASTENING

The pump should be mounted and fastened on a solid base plate with a flat and horizontal surface to avoid distortion.



The max. permissible loads on the flanges stated in paragraph 2.2 are to be observed.

At installations pumping hot or very cold liquids, the operator must be aware that it is dangerous to touch the pump surface and, consequently, he must take the necessary safety measures.

3.2 WIRING



Wiring to be carried out by authorised skilled workmen according to the rules and regulations in force.

4. TRANSPORT/STORAGE

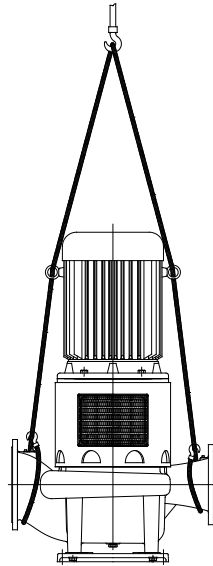
The weights of the pumps in A and D combination (without motor) are stated in the following table, and the pumps are to be lifted as shown below. The D12-combination is as standard only available in ø330/415/525.

Pump	Weight in kg A02 / D02 / A12 / D12 comb. incl. base plate	Pump	Weight in kg A02 / D02 / A12 / D12 comb. incl. base plate
NSL80-215	126 / 141 / 100 / ----	NSL150-330	339 / 329 / 289 / 279
NSL80-265	135 / 152 / 109 / ----	NSL150-415	454 / 474 / 404 / 424
NSL80-330	256 / 261 / 206 / 211	NSL200-265	207 / 240 / ---- / ----
NSL100-215	137 / 154 / 111 / ----	NSL200-330	409 / 394 / 359 / 344
NSL100-265	136 / 153 / 120 / ----	NSL200-415	529 / 549 / 479 / 499
NSL100-330	261 / 267 / 211 / 217	NSL200-525	699 / 789 / 629 / 719
NSL100-415	379 / 399 / 329 / 349	NSL250-265	301 / 341 / ---- / ----
NSL125-215	148 / 163 / 122 / ----	NSL250-330	489 / 479 / 439 / 429
NSL125-265	154 / 175 / 128 / ----	NSL250-415	609 / 614 / 559 / 564
NSL125-330	276 / 282 / 226 / 232	NSL250-525	809 / 924 / 739 / 854
NSL125-415	414 / 434 / 364 / 384	NSL300-415	729 / 729 / 679 / 679
NSL150-215	167 / 191 / 141 / ----	NSL300-525	870 / 1005 / 800 / 935
NSL150-265	172 / 197 / 146 / ----		

The pump is to be stored in a dry area.

Before shipment the pump is to be fastened securely on pallets or the like.

The pump is to be lifted in the following way:



The lifting straps must not bear against sharp edges and corners

5. DISMANTLING

5.1 ACCESS TO IMPELLER

The numbers in brackets refer to the position numbers on the assembly drawing.

ø215/265 02-combination

Remove guards (28). Remove Allen screws (22) which hold the shaft seal cover (18) and the motor bracket (20) to the pump casing (1). Dismantle copper pipe (58). Remove motor bracket and motor. Loosen shaft seal cover (18) from pump casing by means of the two M12 bolts in the threaded holes in the shaft seal cover. The shaft seal cover with shaft and impeller can now be lifted up allowing inspection of the impeller.

ø215/265 12-combination

Remove guards (28). Remove Allen screws (22) which hold the motor bracket (20) to the pump casing (1). Dismantle copper pipe (58). The top piece can now be lifted up allowing inspection of the impeller.

ø330/415/525 02-combination

Remove guards (28). Remove set screws (64) which hold the motor bracket (20) to the pump casing (1). Dismantle copper pipe (58). Remove motor bracket and motor. Remove set screws (22) with washers (23), which hold the shaft seal cover (18) to the pump casing. Loosen the shaft seal cover from the pump casing by means of the pointed screws (86). The shaft seal cover with shaft and impeller can now be lifted up allowing inspection of the impeller.

ø330/415/525 12-combination

Remove guards (28). Remove set screws (64) which hold the motor bracket (20) to the pump casing (1). Dismantle copper pipe (58). Remove set screws (22) with washers (23), which hold the shaft seal cover (18) to the pump casing. Loosen the shaft seal cover from the pump casing by means of the pointed screws (86). The motor and motor bracket with shaft seal cover and shaft with impeller can now be lifted up allowing inspection of the impeller.

5.2 DISMANTLING SHAFT SEAL

Ø215/265 02-combination

Pull the shaft seal cover off the motor bracket, by which the coupling (19) is pulled off the motor shaft. Remove nut (6). Pull off the impeller (5) and remove sunk key (9). Remove Allen screws (16), which hold the bearing cover (15) to the shaft seal cover, pull shaft seal cover and bearing cover apart, by which shaft seal (10) and water deflector (11) are pulled off the shaft.

Ø215/265 12-combination

Remove nut (6). Pull off the impeller (5), and remove sunk key (9). Remove set screws (71) and pull motor bracket and electric motor with shaft (17) apart, by which the shaft seal is pulled off the shaft.

Ø330/415/525 02-combination

Remove set screw (6). Pull off the impeller, and remove sunk key (9). Remove set screws (16), which hold the bearing cover (15) to the shaft seal cover, pull shaft seal cover and bearing cover apart, by which the shaft seal (10) is pulled off the shaft.

Ø330/415/525 12-combination

Remove set screw (6). Pull off the impeller, and remove sunk key (9). Pull shaft seal cover out of motor bracket, by which the shaft seal (10) is pulled off the shaft.

5.3 DISMANTLING SEAT

Press out the seat from behind the shaft seal cover or motor bracket (Ø215/265 in 12-combination)

5.4 DISMANTLING BEARING (ONLY 02-COMBINATION)

Before dismantling bearing, remove ring lock (12). Pull the shaft/coupling out of the bearing cover and press the bearing out of the bearing cover.

5.5 INSPECTION

When the pump has been dismantled, check the following parts for wear and damage:

- Sealing ring/impeller: Max. clearance 0.4-0.5 mm measured in radius.
- Shaft seal/shaft seal cover: Check the seat for flatness and cracks.
Check the rubber parts for elasticity.
- Bearings: Replace in case of wear and noise.

5.6 DISMANTLING COUPLING (02-COMBINATION) / SHAFT (12-COMBINATION)

It is not necessary to remove the coupling in the 02-combination or the shaft in the 12-combination during normal maintenance. However, in the 12-combination the shaft must be removed when the lower bearing in the electric motor is replaced.

02-combination:

Dismantle the coupling by removing the pointed screw (73) and pull off the coupling. If the coupling is removed on the assembled pump, take care that the bearing is not damaged by pulling too hard on the coupling. If the coupling is removed after dismantling the pump, fix the shaft at the thread at the opposite shaft end, while the coupling is pulled off. The coupling might be heated to facilitate dismantling.

12-combination:

Remove pointed screws (73). Pull off the shaft. . The coupling might be heated to facilitate dismantling.

6. ASSEMBLING

6.1 FITTING SEALING RINGS

When fitted, the sealing ring (4) is to bear against the shoulder of the pump casing.

ø330/415/525

When fitted the sealing ring (27) is to bear against the shoulder of the shaft seal cover (20).

6.2 FITTING BEARING (ONLY 02-COMBINATION)

Place the support disc (14) (grease valve ring in ø330/415/525 with angular ball bearings) in the bearing cover and press the bearing into place in the bearing cover. Lead the shaft through the bearing cover, support disc and bearing, and press the bearing into place up against the support disc. Fit ring lock (12).

ø330/415/525

Fit cover under bearing (26).

6.3 FITTING WATER DEFLECTOR (ONLY 02-COMBINATION)

ø215/265

Assemble bearing cover and shaft seal cover. Lead the water deflector (11) over the shaft until it touches the shaft seal cover and then further 1-1.5 mm into the shaft seal cover. Do not fasten bearing cover and electric motor until the motor has been mounted and the shaft can rotate freely without noise.

ø330/415/525

Lead the water deflector (11) over the shaft until it touches the cover under bearing (26) and then further 1-1.5 mm towards the cover under bearing. Assemble bearing cover and shaft seal cover. Do not fasten bearing cover and electric motor until the motor has been mounted and the shaft can rotate freely without noise.

6.4 FITTING SHAFT SEAL

Before fitting the seat, clean the recess in the shaft seal cover or the motor bracket (ø215/265 in 12-combination). When fitting the seat, remove the protective coating without scratching the lapped surface. Dip the outer rubber ring of the seat into soapy water. Now press the seat into place with the fingers and check that all parts are correctly imbedded.

If it is necessary to use tools for assembling, then protect the sliding surface of the seat to prevent it from being scratched or cut. Lubricate the inner surface of the slide ring rubber bellows with soapy water and push it over the shaft. The use of a conical fitting bush as shown on the assembly drawing is recommended to avoid that the rubber bellows is cut.

Push the slide ring over the shaft with the hand. If the rubber bellows is tight, use a fitting tool and take care that the slide ring is not damaged. If the carbon ring is not fixed, it is important to check that it is fitted correctly, i.e. the chamfered/lapped side is to face the seat. The carbon ring can be held by a little grease.

When using soapy water on the shaft, the bellows will settle and seat in abt. 15 minutes, and until then tightness should not be expected. After start, check by viewing the leak hole that there are no leaks.

6.5 FITTING IMPELLER

Fit the sunk key in the shaft and lead the impeller towards the shoulder of the shaft. Take care that the ring at the end of the shaft seal spring locates in the recess of the impeller. Secure the impeller with washers (7 and 8) and a nut ($\varnothing 215/265$) or a set screw ($\varnothing 330/415/525$).

6.6 FITTING SHAFT SEAL COVER OR MOTOR BRACKET (12-COMBINATION)

Place the O-ring (21) between pump casing and shaft seal cover (or motor bracket in $\varnothing 215/265$ 12 combination) in the O-ring groove and hold it with a little grease. However, check the material of the O-ring first. As standard the material is nitrile, but it might be EPDM which will be damaged by mineral grease. Use soft soap or silicone grease for EPDM. Fit and fasten shaft seal cover or motor bracket, mounted with the electric motor, in the pump casing. Screw the pointed screws (86) back into the shaft seal cover before tightening. Fit copper pipe (58).

6.7 SHAFT

When the pump has been assembled, check that the shaft rotates freely. In case the shaft has been dismantled in the 12-combination, tap the shaft towards the shaft end of the electric motor by means of a plastic hammer, and fasten the pointed screws (first the middle screw) according to the below table. Check that the wobble, measured as close to the shaft end as possible, is within the limits indicated in the table.

Motor size	Dimension Pointed screws	Torque Pointed screws	Max. wobble
100/112	M6	10 Nm	70 μm
132	M8	24 Nm	70 μm
160	M10	40 Nm	70 μm
180	M12	55 Nm	70 μm
200	M12	75 Nm	70 μm
225	M16	160 Nm	70 μm
250	M16	160 Nm	70 μm
280	M16	160 Nm	70 μm
315	M16	160 Nm	70 μm
315 / 355	M20	320 Nm	70 μm

6.8 FITTING COUPLING (ONLY 02-COMBINATION)

Fit sunk key (76). If the coupling is fitted on the assembled pump, take care that you do not damage the bearing by pressing the coupling too hard. The coupling might be heated to facilitate the fitting. If the coupling is fitted before assembling the pump, the shaft must be supported at the opposite shaft end while the coupling is pressed into place. When the coupling bears against the shoulder of the pump shaft, fit the pointed screw.

7. FROST PROTECTION

Pumps which are not in operation during frost periods are to be drained to avoid frost damage. Remove the plug (3) at the bottom to empty the pump. Alternatively, it is possible to use anti-freeze liquids in normal constructions.

8. DISMANTLING



Before dismantling the pump make sure that it has stopped. Empty the pump of liquid before it is dismantled from the piping system. If the pump has been pumping dangerous liquids you are to be aware of this and take the necessary safety measures. If the pump has been pumping hot liquids, take great care that it is drained before it is removed from the piping system.

9. START-UP



A centrifugal pump will not function until it has been filled with liquid between the foot valve and somewhat above the impeller of the pump.

The liquid also serves as coolant for the shaft seal. In order to protect the shaft seal the pump must not run dry.

ATTENTION

For safety reasons the pump is only allowed to operate against closed suction and discharge valves for a short time (max. 5-10 minutes and at a max. temperature of 130°C). Otherwise there is a risk of damage to the pump and, at worst, of a steam explosion. If the pump is not manually observed, the installation of a safety device is recommended.

9.1 START-UP

Before starting the pump check that:

- the shaft rotates freely without jarring sounds.
- the pump casing and the suction line are filled with liquid.

Start the pump for a moment to check the direction of rotation. If the direction is correct (i.e. in the direction of the arrow) the pump may be started.

10. SYSTEM BALANCING

It is often difficult to calculate a manometric delivery head in advance. It is, however, decisively important to the quantity of liquid delivered.

A considerably smaller delivery head than expected will increase the quantity of liquid delivered, causing increased power consumption and perhaps cavitation in pump and piping. In the pump the impeller may show signs of heavy erosion caused by cavitation (corrosion) which may at times render an impeller unfit for use in a very short time. Not unusually do similar erosions occur in pipe bends and valves elsewhere in the piping system.

Therefore, after start-up, it is necessary to check either the quantity of liquid delivered or the power consumption of the pump e.g. by measuring the current intensity of the connected motor. Together with a reading of the differential pressure the quantity of water delivered can be determined against the characteristics of the pump.

Should the pump not function as intended, please proceed according to the fault-finding list. Bear in mind, though, that the pump was carefully checked and tested at the factory and that the majority of faults stem from the piping system

FAULT	CAUSE	REMEDY
The pump has no or too low capacity	<ol style="list-style-type: none"> 1. Wrong direction of rotation 2. Piping system choked 3. The pump is choked 4. Suction line leaks Pump takes air 5. Suction lift too high 6. Pump and piping system wrongly dimensioned 	<p>Change direction of rotation to clockwise when viewed from shaft end (the direction of the arrow)</p> <p>Clean or replace</p> <p>Clean the pump</p> <p>Find the leakage, repair the fault, non-return valve not submerged</p> <p>Check data sheet Q/H curve and NPSH or contact DESMI</p> <p>As 5</p>
The pump uses too much power	<ol style="list-style-type: none"> 1. Counter-pressure too low 2. The liquid is heavier than water 3. Foreign body in pump 4. Electric motor is running on 2 phases 	<p>Insert orifice plate or check valve/Contact DESMI</p> <p>Contact DESMI</p> <p>Dismantle the pump, remove the cause</p> <p>Check fuses, cable connection, and cable</p>
The pump makes noise	<ol style="list-style-type: none"> 1. Cavitation in pump 	<p>Suction lift too high/ Suction line wrongly dimensioned/Liquid temperature too high</p>

11. INSPECTION AND MAINTENANCE

Inspect the shaft seal for leaks at regular intervals.

- Before inspection of a pump without guard check that the pump cannot be started unintentionally.
- The system is to be without pressure and drained of liquid.
- The repairman must be familiar with the type of liquid which has been pumped as well as the safety measures he is to take when handling the liquid.

11.1 DRAINING THE PUMP

When the piping system has been drained, note that there is still liquid in the pump. Remove the liquid by dismantling the pipe plug (3) at the bottom of the pump.

11.2 BEARING

In the 12-combination the life depends on the relubrication, size and quality of the bearing in the motor.

ø215/265 in 02-combination

The bearing in the 02-combination is dimensioned for a nominal life of 25,000 working hours. The bearing is lubricated for life and requires no attention but is to be replaced in case of noise or bearing wear.

ø330/415/525 in 02-combination

The bearing is dimensioned for a nominal life of 100,000 working hours and is to be relubricated according to the below table. The bearing is to be replaced in case of noise or bearing wear.

Light bearing housing (single-row ball bearing)

The bearing is to be relubricated through the lubricator nipple (84) in the bearing cover (15). In connection with replacement, the bearings are to be mounted with the RS - sealing facing downwards, fill the bearing itself with grease and place a grease bead on the bearing towards the shaft in a quantity corresponding to the table below.

Heavy bearing housing (two angular ball bearings)

The bearings are to be relubricated through the lubricator nipple (84) in the bearing cover (15). Fill the bearings with grease and place a grease bead on the bearing towards the shaft in a quantity corresponding to the table below.

Pump	Assembly	Interval	Quantity
NSL80-330 NSL100-330 NSL125-330 NSL100-415 NSL125-415	Light bearing housing	4500 hours	30 g
NSL150-330 NSL200-330 NSL250-330 NSL150-415	Heavy bearing housing	4500 hours	40 g
NSL200-415 NSL250-415 NSL300-415	Heavy bearing housing	4500 hours	50 g
NSL200-525 NSL250-525 NSL300-525	Heavy bearing housing	4500 hours	80 g

If the pump liquid temperature is below 80°C the following types of grease are recommended:

ESSO	Beacon 2
BP	Energrease EP grease 2
Shell	Alvania grease 2
Mobil	Mobil lux grease EP 2 eller Mobil plex 47
Castrol	Spherol AP 2
Texaco	Multifak EP 2
Q8	Rembrandt EP 2 eller Rubens
Statoil	Statoil Uniway u2

If the pump liquid temperature is above 80°C, high-temperature grease is recommended, e.g. SKF LGHP2.

12. REPAIRS

12.1 ORDERING SPARE PARTS

When ordering spare parts please always state pump type, serial No. (appears on the name plate of the pump), position No. on the assembly drawing and designation on the spare parts list.

13. OPERATING DATA

The following working pressures (pressure in piping incl. the pressure increase caused by the pump) and number of revolutions are allowed in standard pumps.

ø215/265

In the 02-combination the ø215 pumps are as standard available with motors up to frame size 225 (inclusive) and ø265 pumps with motors up to frame size 280 (inclusive).

In the 12-combination the ø215 pumps are as standard available with motors up to frame size 180 (inclusive) and ø265 pumps with motors up to frame size 200 (inclusive).

ø330/415/525

In the 02/12-combination the ø330 pumps are as standard available with motors up to frame size 315 (inclusive) and ø415 pumps with motors up to frame size 355 (inclusive).

Pump	Max. working pressure [bar] Bronze / Cast iron	Max. working pressure [bar] SG-iron	Max. RPM 12- / 02-combination	Pump	Max. working pressure [bar] Bronze / Cast iron	Max. working pressure [bar] SG-iron	Max. RPM 12- / 02-combination
NSL80-215	16	32	1800 / 3600	NSL150-330	7 / 13	27	1800 / 1800
NSL80-265	14,5	29	1800 / 3600	NSL150-415	9 / 13	26	1800 / 1800
NSL80-330	15 / 15	27	1800 / 3600	NSL200-265	9	18	----- / 1800
NSL100-215	13	26	1800 / 3600	NSL200-330	7 / 13	26	1800 / 1800
NSL100-265	14,5	29	1800 / 3600	NSL200-415	9 / 13	26	1800 / 1800
NSL100-330	8 / 14	29	1800 / 1800	NSL200-525	14	25	1800 / 1800
NSL100-415	10 / 12,5	25	1800 / 1800	NSL250-265	10 / 10	20	---- / 1800
NSL125-215	10	20	1800 / 3600	NSL250-330	7 / 12	25	1800 / 1800
NSL125-265	14,5	29	1800 / 3600	NSL250-415	9 / 12	25	1800 / 1800
NSL125-330	7 / 12	25	1800 / 1800	NSL250-525	14	25	1800 / 1800
NSL125-415	9 / 13	26	1800 / 1800	NSL300-415	9 / 12	25	1800 / 1800
NSL150-215	8	16	----- / 1800	NSL300-525	14	25	1800 / 1800
NSL150-265	7	14	1800 / 1800				

The above-mentioned max. working pressure is **NOT** valid for pumps approved by a classification society. Pumps approved by classification societies have been pressure tested according to the requirements of these societies, i.e. a test pressure of 1.5 x the permissible working pressure. The test pressure is stated in the test certificate and stamped into the discharge flange of the pump.

14. EU DECLARATION OF CONFORMITY

DESMI A/S, hereby declare that our pumps of the NSL Monobloc type are manufactured in conformity with the following essential safety and health requirements in the COUNCIL DIRECTIVE 2006/42/EC on machines, Annex 1.

The following harmonized standards have been used:

EN 294:1994	Safety of machinery. Safety distances to prevent danger zones being reached by the upper limbs
EN 809 + A1	Pumps and pump units for liquids – Common safety requirements
EN 12162:2001	Liquid pumps – Safety requirements – Procedure for hydrostatic testing
EN 60204-1:2006	Safety of machinery – Electrical equipment of machines (item 4, General requirements)

Pumps delivered by us connected with prime movers are CE-marked and comply with the above requirements.

Pumps delivered by us without prime movers (as partly completed machinery) must only be used when the prime mover and the connection between prime mover and pump comply with the above requirements.

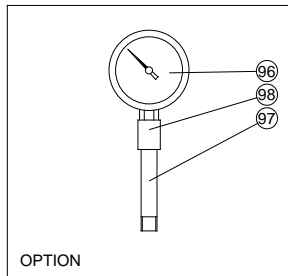


Nørresundby, June 1, 2010

Kurt Bech Christensen
Technical Director

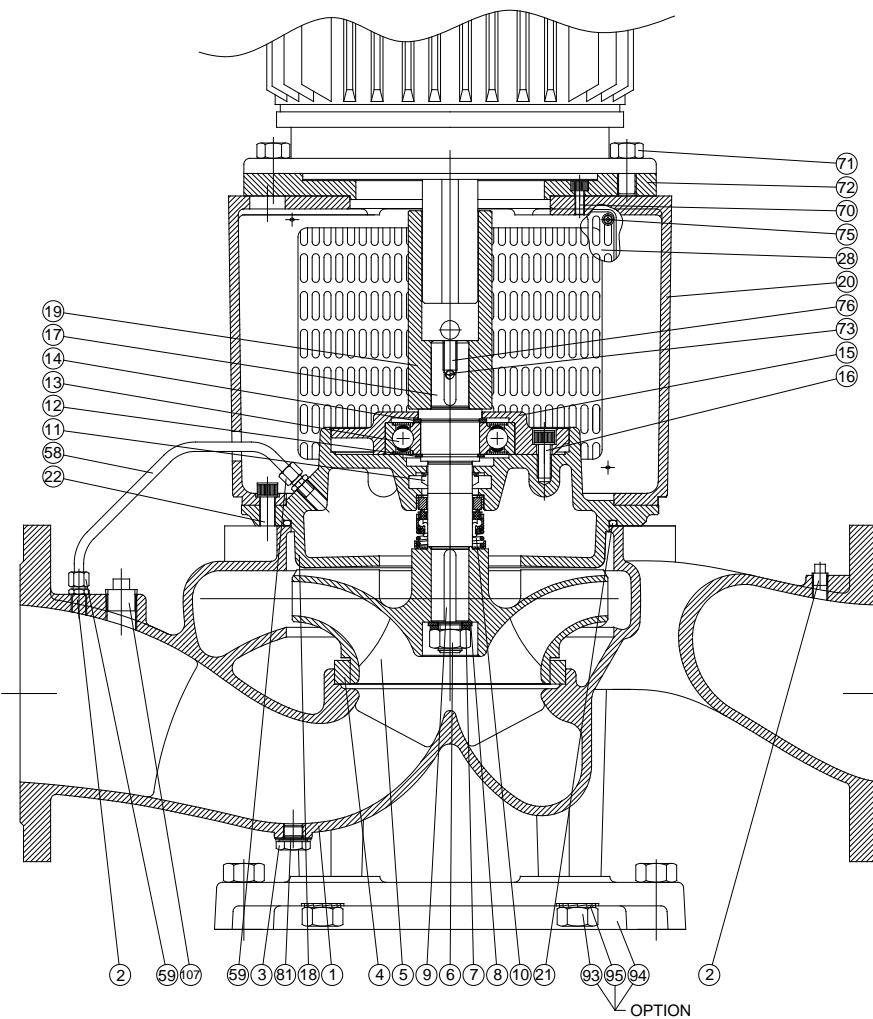
DESMI A/S
Tagholm 1
9400 Nørresundby

15. ASSEMBLY DRAWING Ø215/265 02-COMB.



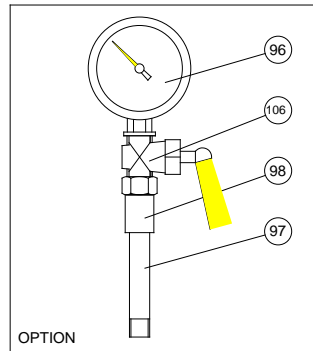
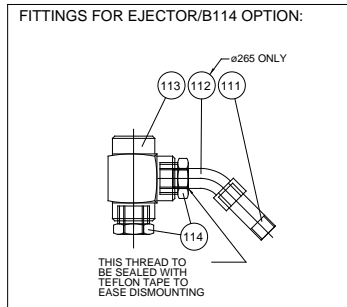
16. SPARE PARTS LIST Ø215/265 02-COMB.

See Ø330/415/525 pump on the next pages



- 1 Pump casing
- 2 Pipe plug
- 3 Pipe plug
- 4 Sealing ring
- 5 Impeller
- 6 Nut
- 7 Spring collar
- 8 Washer
- 9 Sunk key
- 10 Shaft seal
- 11 Water deflector
- 12 Ring lock
- 13 Ball bearing
- 14 Support disc
- 15 Bearing cover
- 16 Allen screw
- 17 Shaft
- 18 Shaft seal cover
- 19 Coupling
- 20 Motor bracket
- 21 O-ring
- 22 Allen screw
- 28 Guard
- 58 Copper pipe
- 59 Hexagon nipple
- 70 Allen screw
- 71 Set screw
- 72 Intermediate flange
- 73 Pointed screw
- 75 INSEX-screw
- 76 Sunk key
- 81 Sealing washer
- 93 Set screw
- 94 Base plate
- 95 Lock washer
- 96 Manometer
- 97 Nipple
- 98 Sleeve
- 107 Pipe plug

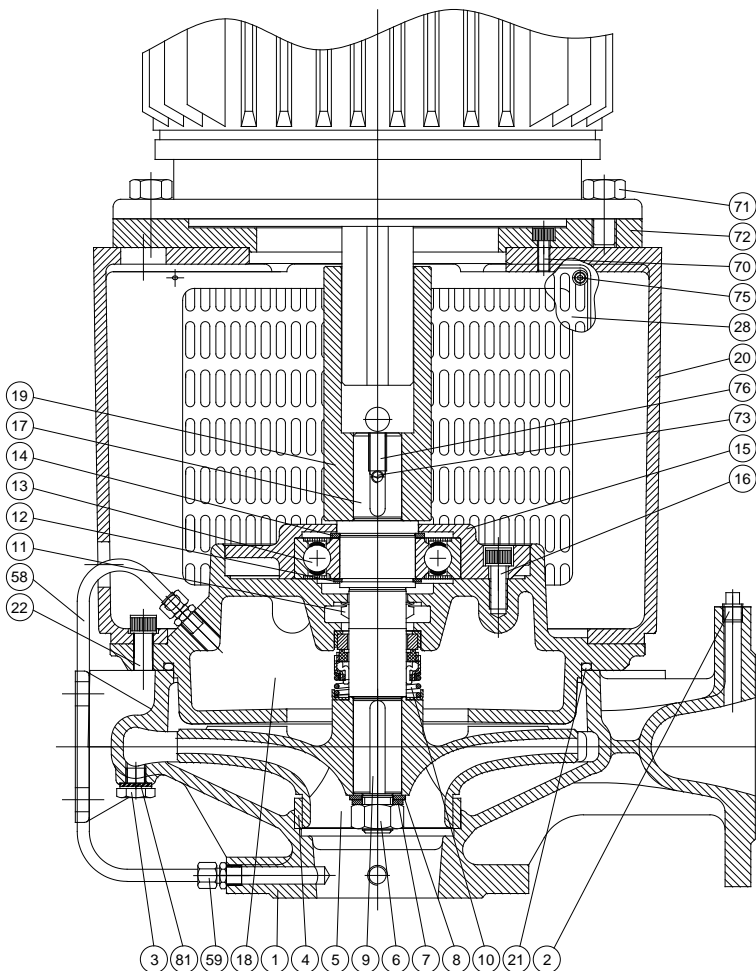
15A. ASSEMBLY DRAWING Ø215/265 02-COMB.



16A. SPARE PARTS LIST

NSLV IN Ø215/265 02-COMB.

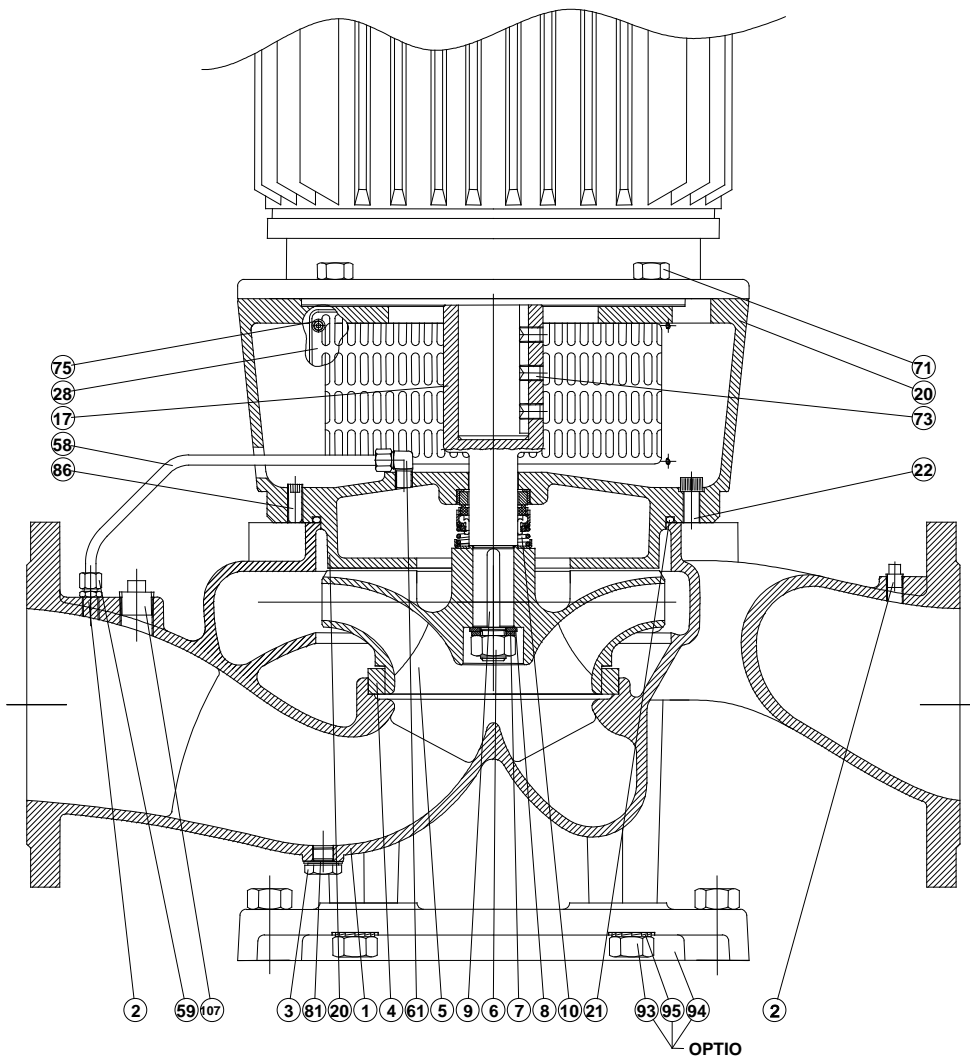
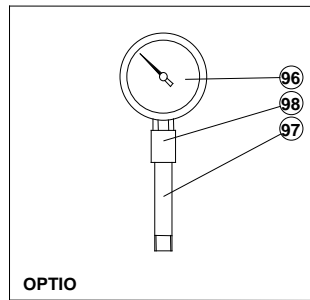
See ø330/415/525 pump on the next pages



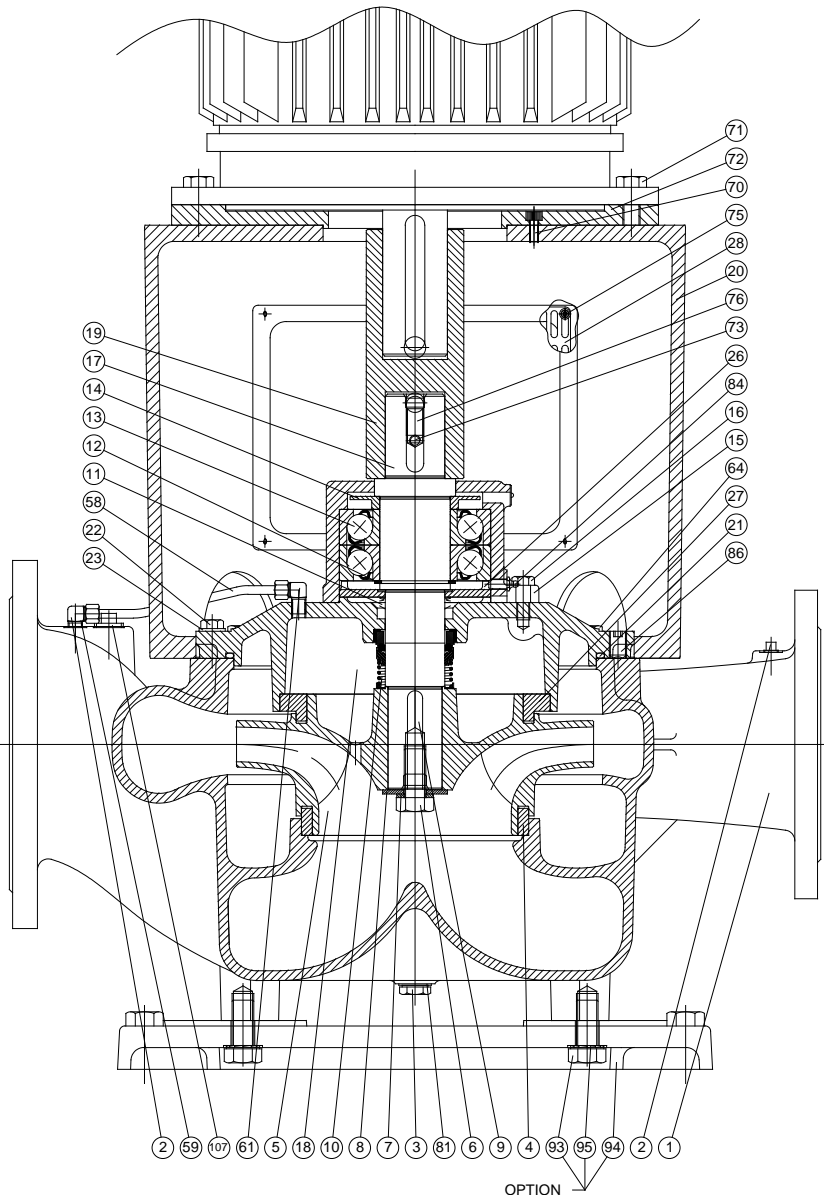
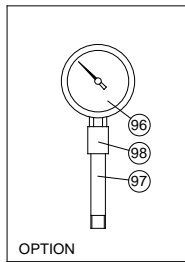
- 1 Pump casing
- 2 Pipe plug
- 3 Pipe plug
- 4 Sealing ring
- 5 Impeller
- 6 Nut
- 7 Spring collar
- 8 Washer
- 9 Sunk key
- 10 Shaft seal
- 11 Water deflector
- 12 Ring lock
- 13 Ball bearing
- 14 Support disc
- 15 Bearing cover
- 16 Allen screw
- 17 Shaft
- 18 Shaft seal cover
- 19 Coupling
- 20 Motor bracket
- 21 O-ring
- 22 Allen screw
- 28 Guard
- 58 Copper pipe
- 59 Hexagon nipple
- 70 Allen screw
- 71 Set screw
- 72 Intermediate flange
- 73 Pointed screw
- 75 INSEX-screw
- 76 Sunk key
- 81 Sealing washer
- 96 Manometer
- 97 Nipple
- 98 Sleeve
- 106 Valve (optional)

17. ASSEMBLY DRAWING Ø215/265 12-COMB.

18. SPARE PARTS LIST Ø215/265 12-COMB.



- 1 Pump casing
- 2 Pipe plug
- 3 Pipe plug
- 4 Sealing ring
- 5 Impeller
- 6 Nut
- 7 Spring collar
- 8 Washer
- 9 Sunk key
- 10 Mech. shaft seal
- 17 Shaft
- 20 Motor bracket
- 21 O-ring
- 22 Allen screw
- 28 Guard
- 58 Copper pipe
- 59 Hexagon nipple
- 71 Set screw
- 73 Pointed screw
- 75 INSEX-screw
- 81 Sealing washer
- 93 Set screw
- 94 Base plate
- 95 Lock washer
- 96 Manometer
- 97 Nipple
- 98 Sleeve
- 107 Pipe plug



19. ASSY. DRAWING ø330/415/525 02-COMB.

20. SPARE PARTS LIST ø330/415/525 02-COMB.

- 1 Pump casing
- 2 Pipe plug
- 3 Pipe plug
- 4 Sealing ring
- 5 Impeller
- 6 Set screw
- 7 Spring collar
- 8 Washer
- 9 Sunk key
- 10 Mech. shaft seal
- 11 Water deflector
- 12 Ring lock
- 13 Ball bearing
- 14 Grease valve ring*
- 15 Bearing cover
- 16 Set screw
- 17 Shaft
- 18 Shaft seal cover
- 19 Coupling
- 20 Motor bracket
- 21 O-ring
- 22 Set screw
- 23 Lock washer
- 26 Cover under bearing
- 27 Sealing ring 2
- 28 Guard
- 58 Copper pipe
- 59 Hexagon nipple
- 61 Hexagon nipple
- 64 Set screw
- 70 Allen screw
- 71 Set screw
- 72 Intermediate flange
- 73 Pointed screw
- 75 INSEX-screw
- 76 Sunk key
- 81 Sealing washer
- 84 Lubricator nipple
- 86 Pointed screw
- 93 Set screw
- 94 Base plate
- 95 Lock washer
- 96 Manometer

97 Nipple

98 Sleeve

107 Pipe plug

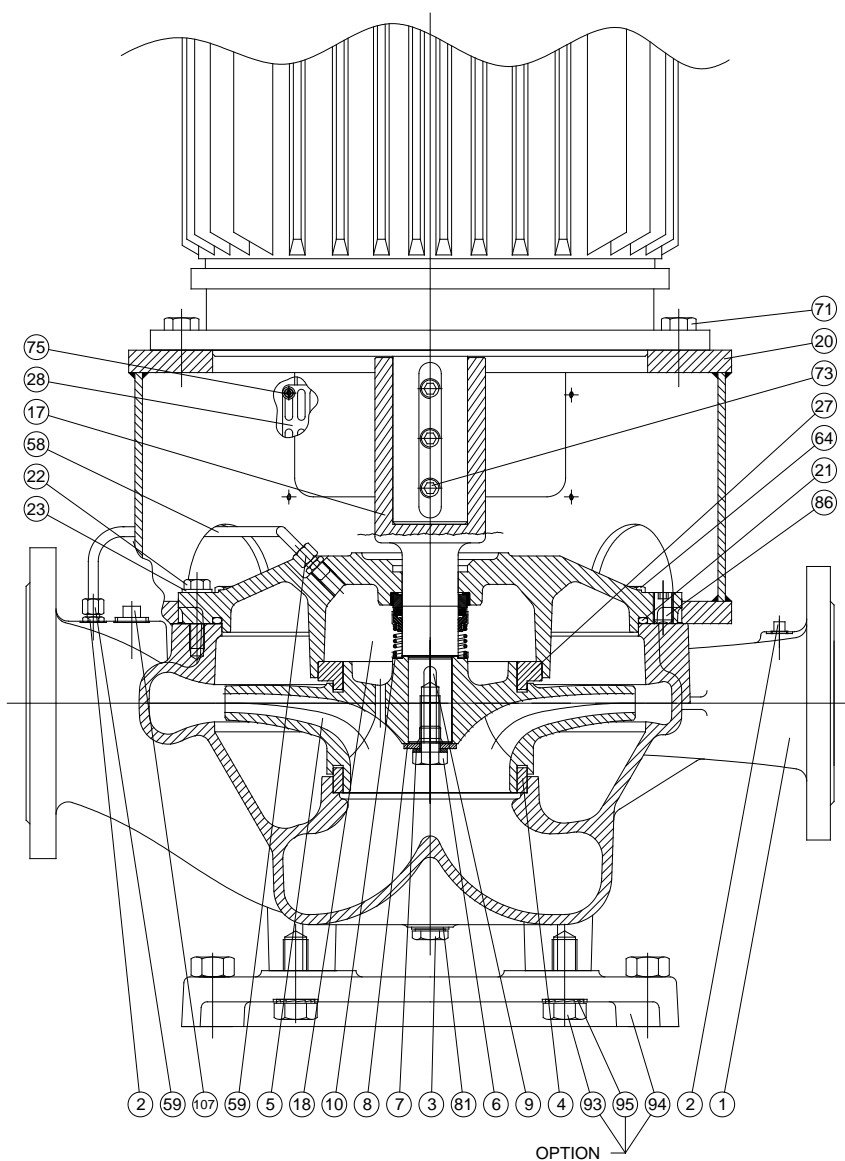
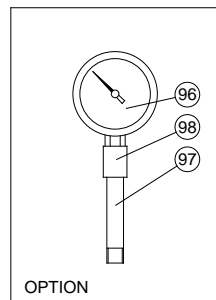
*) Support disc in light bearing housing

DESMI A/S
 Tagholm 1
 9400 Nørresundby – Danmark
 Tlf. nr.: +45 96 32 81 11
 Fax +45 98 17 54 99
 E-mail: desmi@desmi.com

www.desmi.com

21. ASSY. DRAWING ø330/415/525 12-COMB.

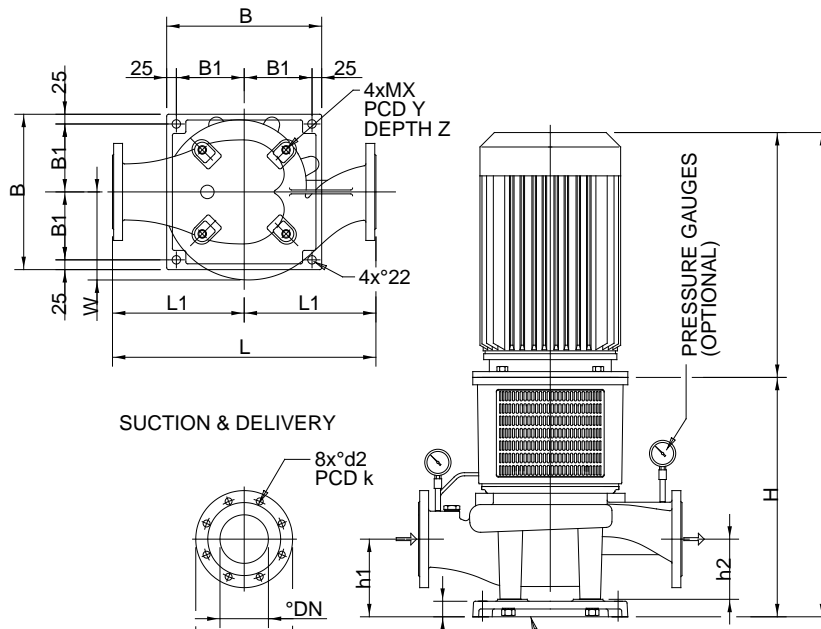
22. SPARE PARTS LIST ø330/415/525 12-COMB.



- 1 Pump casing
- 2 Pipe plug
- 3 Pipe plug
- 4 Sealing ring
- 5 Impeller
- 6 Set screw
- 7 Spring collar
- 8 Washer
- 9 Sunk key
- 10 Mech. shaft seal
- 17 Shaft
- 18 Shaft seal cover
- 20 Motor bracket
- 21 O-ring
- 22 Set screw
- 23 Lock washer
- 27 Sealing ring 2
- 28 Guard
- 58 Copper pipe
- 59 Hexagon nipple
- 64 Set screw
- 71 Set screw
- 73 Pointed screw
- 75 INSEX-screw
- 81 Sealing washer
- 86 Pointed screw
- 93 Set screw
- 94 Base plate
- 95 Lock washer
- 96 Manometer
- 97 Nipple
- 98 Sleeve
- 107 Pipe plug

23. DIMENSIONAL SKETCH $\varnothing 215/265$ 02-COMBINATION

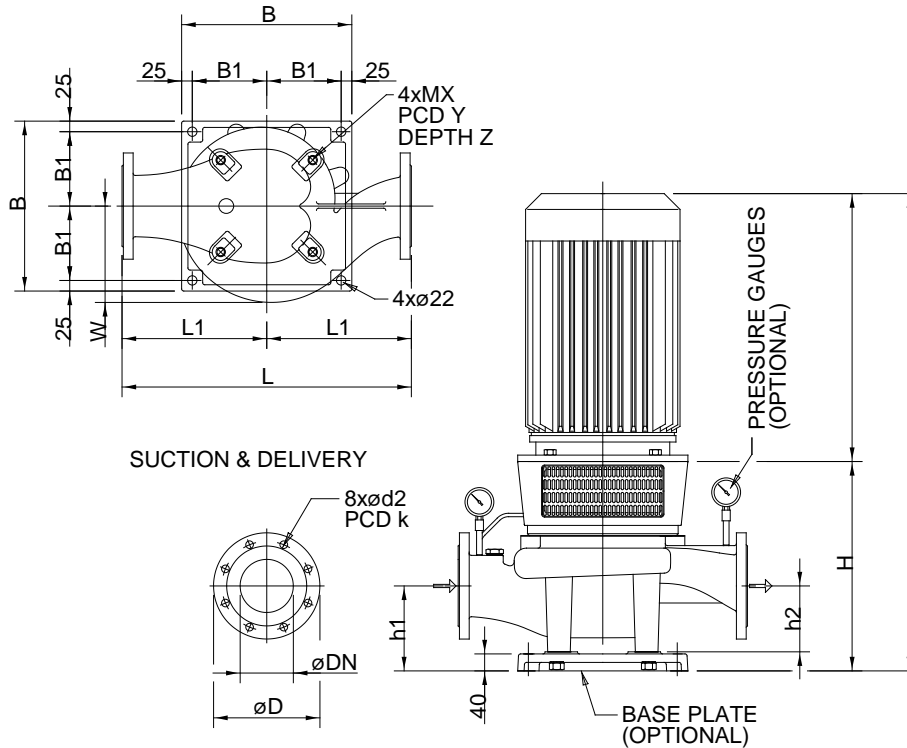
See $\varnothing 330/415/525$ pumps on the next pages



Manometer: 1/4" BSP. Drain: 3/8" BSP. Priming: 1/2" BSP

Type	H	h1	h2	L	L1	W	DN	D	d2	k	X	Y	Z	B	B1
NSL80-215	567	200	155	530	265	163	80	200	18	160	20	306	25	350	175
NSL80-265	574	200	155	580	290	193	80	200	18	160	20	306	25	350	175
NSL100-215	587	200	155	580	290	181	100	220	18	180	20	306	25	350	175
NSL100-265	593	200	155	630	315	193	100	220	18	180	20	306	25	350	175
NSL125-215	600	200	155	630	315	203	125	250	18	210	20	306	25	350	175
NSL125-265	617	200	155	680	340	227	125	250	18	210	20	306	25	350	175
NSL150-215	636	230	185	680	340	239	150	285	22	240	20	306	25	350	175
NSL150-265	640	200	155	730	365	250	150	285	22	240	20	306	25	350	175
NSL200-265	681	260	215	780	390	290	200	340	23	295	20	306	25	350	175
NSL250-265	727	260	215	800	400	324	250	405	22	350	20	306	25	350	175

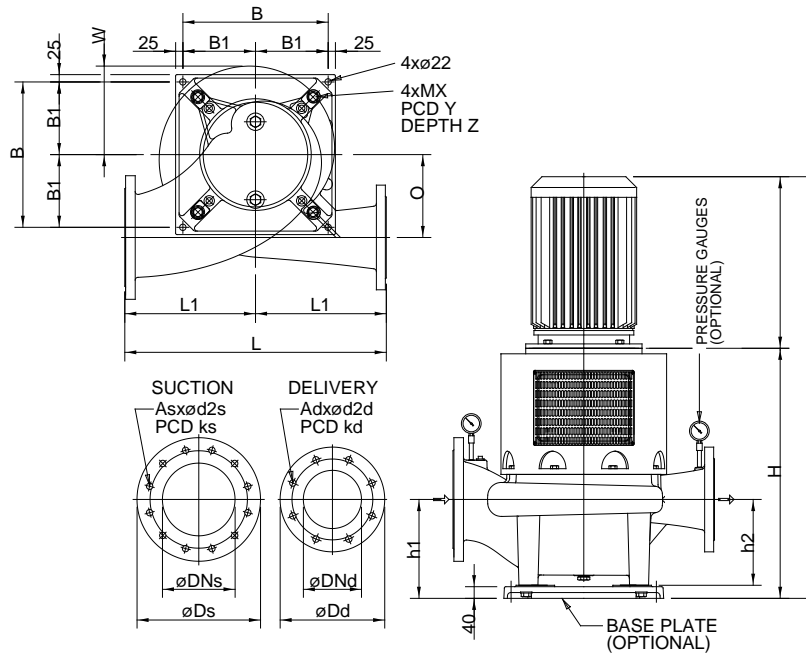
24. DIMENSIONAL SKETCH $\varnothing 215/265$ 12-COMBINATION



Manometer: 1/4" BSP. Drain: 3/4" BSP. Priming: 1/2" BSP

Type	H	h1	h2	L	L1	W	DN	D	d2	k	X	Y	Z	B	B1
NSL80-215	444	200	155	530	265	163	80	200	18	160	20	306	25	350	175
NSL80-265	450	200	155	580	290	193	80	200	18	160	20	306	25	350	175
NSL100-215	465	200	155	580	290	181	100	220	18	180	20	306	25	350	175
NSL100-265	470	200	155	630	315	193	100	220	18	180	20	306	25	350	175
NSL125-215	478	200	155	630	315	203	125	250	18	210	20	306	25	350	175
NSL125-265	493	200	155	680	340	227	125	250	18	210	20	306	25	350	175
NSL150-265	517	200	155	730	365	250	150	285	22	240	20	306	25	350	175

25. DIMENSIONAL SKETCH Ø330/415/525 02-COMBINATION



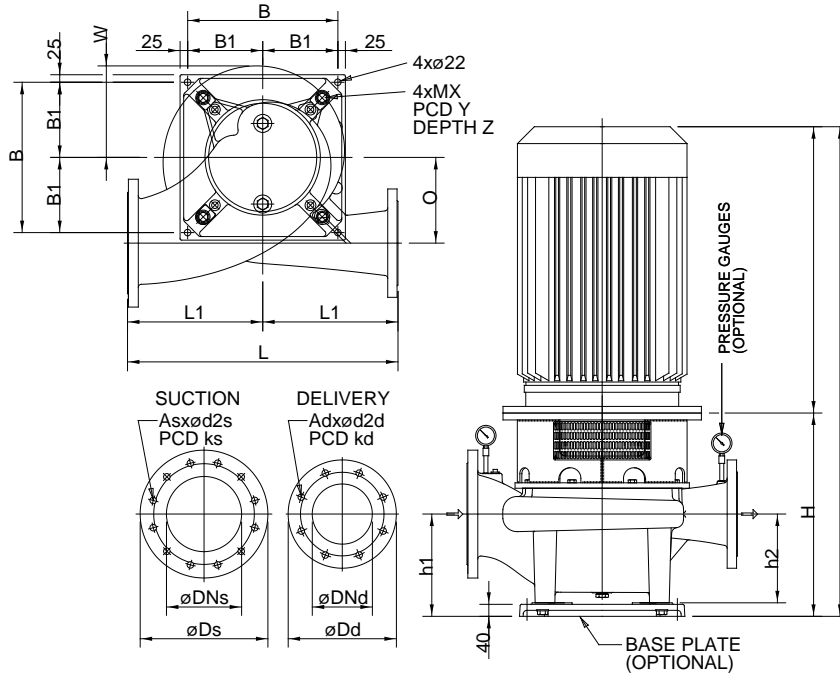
Manometer: 1/4" BSP. Drain: 3/4" BSP. Priming: 1/2" BSP

Type	H	h1	h2	L	L1	W	Ds A- exe.	Dd A- exe.	Ds D- exe.	Dd D- exe.	DNs	DNd	ks	kd
NSL80-330	738	260	215	600	300	250	235	200	220	200	100	80	180	160
NSL100-330	743	260	215	650	325	250	270	235	250	220	125	100	210	180
NSL100-415	761	260	215	700	350	275	270	235	250	220	125	100	210	180
NSL125-330	788	300	255	700	350	250	300	270	285	250	150	125	240	210
NSL125-415	799	300	255	750	375	278	300	270	285	250	150	125	240	210
NSL150-330	799	300	255	750	350	275	360	300	340	285	200	150	295	240
NSL150-415	845	340	295	800	400	293	360	300	340	285	200	150	295	240
NSL200-330	842	340	295	900	450	301	425	360	395	340	250	200	350	295
NSL200-415	860	340	295	900	450	308	425	360	395	340	250	200	350	295
NSL200-525	1050	380	335	900	450	385	425	360	425	360	250	200	350	295
NSL250-330	889	380	335	1000	500	327	485	425	445	395	300	250	400	350
NSL250-525	1060	390	345	1100	550	390	485	425	445	395	300	250	400	350

NSL250-415	902	380	335	1000	500	355	485	425	445	395	300	250	400	350
NSL300-415	953	420	375	1200	600	377	555	485	505	445	350	300	460	400
NSL300-525	1105	435	390	1200	600	419	555	485	555	485	350	300	460	400

Type	d2s	d2d	As	Ad	X	Y	Z	B	B1	O
NSL80-330	18	18	8	8	20	306	25	350	175	200
NSL100-330	18	18	8	8	20	306	25	350	175	210
NSL100-415	18	18	8	8	20	450	25	500	250	250
NSL125-330	22	18	8	8	20	306	25	350	175	225
NSL125-415	22	18	8	8	20	450	25	500	250	260
NSL150-330	22	22	8	8	20	450	25	500	250	235
NSL150-415	22	22	8	8	20	450	25	500	250	275
NSL200-330	22	22	12	8	20	450	25	500	250	260
NSL200-415	22	22	12	8	24	560	28	500	250	285
NSL200-525	22	22	12	8	24	560	28	500	250	330
NSL250-330	22	22	12	12	24	560	28	500	250	275
NSL250-415	22	22	12	12	24	560	28	500	250	305
NSL250-525	22	22	12	12	24	560	28	500	250	340
NSL300-415	22	22	16	12	24	560	28	500	250	320
NSL300-525	22	22	16	12	24	560	28	500	250	365

26. DIMENSIONAL SKETCH Ø330/415/525 12-COMBINATION



Manometer: 1/4" BSP. Drain: 3/4" BSP. Priming: 1/2" BSP

Type	H	h1	h2	L	L1	W	Ds A- exe.	Dd A- exe.	Ds D- exe.	Dd D- exe.	DNs	DNd	ks	kd
NSL80-330	499	260	215	600	300	250	235	200	220	200	100	80	180	160
NSL100-330	504	260	215	650	325	250	270	235	250	220	125	100	210	180
NSL100-415	547	260	215	700	350	275	270	235	250	220	125	100	210	180
NSL125-330	549	300	255	700	350	250	300	270	285	250	150	125	240	210
NSL125-415	585	300	255	750	375	278	300	270	285	250	150	125	240	210
NSL150-330	599	300	255	750	350	259	360	300	340	285	200	150	295	240
NSL150-415	631	340	295	800	400	293	360	300	340	285	200	150	295	240
NSL200-330	643	340	295	900	450	280	425	360	395	340	250	200	350	295
NSL200-525	805	380	335	900	450	385	425	360	425	360	250	200	350	295
NSL200-415	676	340	295	900	450	308	425	360	395	340	250	200	350	295
NSL250-330	690	380	335	1000	500	303	485	425	445	395	300	250	400	350
NSL250-415	718	380	335	1000	500	330	485	425	445	395	300	250	400	350

NSL250-525	815	390	345	1100	550	390	485	425	445	395	300	250	400	350
NSL300-415	764	420	375	1200	600	344	555	485	505	445	350	300	460	400
NSL300-525	860	435	390	1200	600	419	555	485	505	445	350	300	460	400

Type	d2s	d2d	As	Ad	X	Y	Z	B	B1	O
NSL80-330	18	18	8	8	20	306	25	350	175	200
NSL100-330	18	18	8	8	20	306	25	350	175	210
NSL100-415	18	18	8	8	20	450	25	500	250	250
NSL125-330	22	18	8	8	20	306	25	350	175	225
NSL125-415	22	18	8	8	20	450	25	500	250	260
NSL150-330	22	22	8	8	20	450	25	500	250	235
NSL150-415	22	22	8	8	20	450	25	500	250	275
NSL200-330	22	22	12	8	20	450	25	500	250	260
NSL200-415	22	22	12	8	24	560	28	500	250	285
NSL200-525	22	22	12	8	24	560	28	500	250	330
NSL250-330	22	22	12	12	24	560	28	500	250	275
NSL250-415	22	22	12	12	24	560	28	500	250	305
NSL250-525	22	22	12	12	24	560	28	500	250	340
NSL300-415	22	22	16	12	24	560	28	500	250	320
NSL300-525	22	22	16	12	24	560	28	500	250	365