



# DESMI After Sales

Genuine Spare Parts Kits & DESMI 48

# All You Need Service has Never been Easier

DESMI supplies spare parts and Spare Parts Kits for all your DESMI pumps throughout the pump's entire lifetime.

We provide Spare Parts Kits for trouble-free, easy, and simple maintenance and overhaul of your pumps.

*We consider your problem our challenge!*





We offer day-to-day delivery of  
Spare Parts Kits

*Buy DESMI Spare Parts Kits and save money  
compared to purchase of individual parts*

DESMI offers a variety of Spare Parts  
Kits for the following DESMI pump series

- Modular S
- SA
- NSA
- NSL
- DESLUBE
- DSL
- ESL
- PVLN
- ROTAN®
- VAC
- SCRUBBER
- CHOCOLATE
- BWMS (Ballast Water Management System)

For other DESMI pump series, please state pump  
type and serial number.



# Many Benefits

## Spare Parts Kits include:

- Mechanical shaft seal
- Special tool
- Bearings
- O-rings
- Gaskets
- Washers & nuts
- Item list
- Etc.



**SPARE PARTS KIT**  
ITEM NO.: 677494

Spare Parts Kit for the following pump type in the MODULAR S series:  
S 80-70 - 275N (08 / Free shaft end) design  
NB: Applicable for DESMI standard mechanical shaft seal in nitride!

Pos. No.	Quantity	Item no.	Description
0000	1,00	677494	SPARE PARTS KIT S80-70-275N(08)
0001	1,00	112011	INSTRUCTION SPARE PARTS KIT
0006	1,00	704937	NOT
0010	1,00	114779-01	TOOL: REPLACEMENT OF MECHANICAL SHAFT SEAL
0010	1,00	712084	MECHANICAL SHAFT SEAL
0011	1,00	704031	O-RING
0012	1,00	705007	LOCKWASHER
0013	1,00	704910	BEARING
0014	1,00	704908	WASHER
0015	1,00	704909	BEARING
0021	1,00	610014	GASKET
0022	1,00	713238	O-RING

Scan the QR code for help access  
to download manuals, contacts, spare  
parts list etc. or go to  
[www.desmi.com/afterSales](http://www.desmi.com/afterSales)

The item number of the unique Spare Parts Kit, the complete spare parts list, and a QR code are indicated on the back of the Spare Parts Kits.

On our website you can find a After Sales section at [www.desmi.com/aftersales](http://www.desmi.com/aftersales) where you can find:

- Spare Parts Kits overview
- Manuals
- **Overhaul videos (showing complete overhaul of the DESMI pump)**
- Contact form - spare parts requests
- Contacts
- Etc.

## The many benefits:

- **Day-to-day delivery**
- Easy and convenient parts purchase
- Most spare parts kits cover more pumps (same spare parts kit)
- Good overview of your spare parts stock
- Minimized downtime
- Special tool included





To make it easy and convenient for our customers to overhaul the DESMI pump, we have a variety of overhaul videos covering most of our commonly used centrifugal and ROTAN® gear pumps.

In the videos, our service engineer takes you through the overhaul step-by-step, using the DESMI Genuine Spare Parts Kits for the overhaul. The overhaul includes disassembly of the pump, replacement of sealing units, gaskets and bearings, and finally re-assembly of the pump.



On our website you can find videos showing how to use the Spare Parts Kits for overhaul of your pump.  
Go to [www.desmi.com/overhaul.aspx](http://www.desmi.com/overhaul.aspx)

# NSL Centrifugal Pump - Example

Example - this kit covers 30 pumps

**ITEM NO.: 677584**

Spare Parts Kit for the following pump types in the NSL series:

- NSL 180 - 265 (02 / Monobloc & 16 / Compact spacer) design
- NSL 100 - 265 (02 / Monobloc & 16 / Compact spacer) design
- NSL 125 - 265 (02 / Monobloc & 16 / Compact spacer) design
- NSL 150 - 265 (02 / Monobloc & 16 / Compact spacer) design
- NSL 200 - 265 (02 / Monobloc & 16 / Compact spacer) design
  
- NSLV 65-265 (02 / Monobloc & 16 / Compact spacer) design
- NSLV 80-265 (02 / Monobloc & 16 / Compact spacer) design
- NSLV 100-265 (02 / Monobloc & 16 / Compact spacer) design
- NSLV 125-265 (02 / Monobloc & 16 / Compact spacer) design
- NSLV 150-265 (02 / Monobloc & 16 / Compact spacer) design
  
- NSLH 65-265 (02 / Monobloc & 16 / Compact spacer) design
- NSLH 80-265 (02 / Monobloc & 16 / Compact spacer) design
- NSLH 100-265 (02 / Monobloc & 16 / Compact spacer) design
- NSLH 125-265 (02 / Monobloc & 16 / Compact spacer) design
- NSLH 150-265 (02 / Monobloc & 16 / Compact spacer) design



Pos. No	Quantity	Item no.	Description
	1,00	677584	SPARE PARTS KIT NSL80->200-265/-02-16
	1,00	T1508	INSTRUCTION SPARE PARTS KIT
	1,00	114173-02	TOOL - REPLACEMENT OF MECHANICAL SHAFT SEAL
0010	1,00	712098	MECHANICAL SHAFT SEAL
0011	1,00	704019	V-RING
0012	1,00	703111	WASHER
0013	1,00	706804	BEARING
0014	1,00	702424	SUPPORTING RING
0021	1,00	706401	O-RING

Most Spare Parts Kits cover Several Pumps

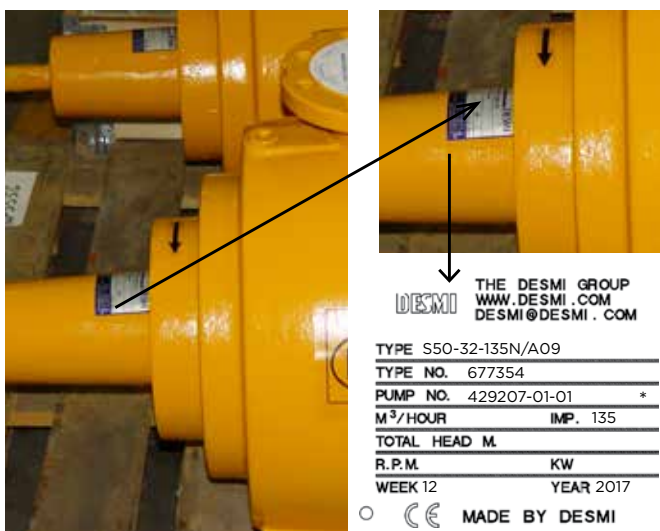


# How to Identify your DESMI Pump

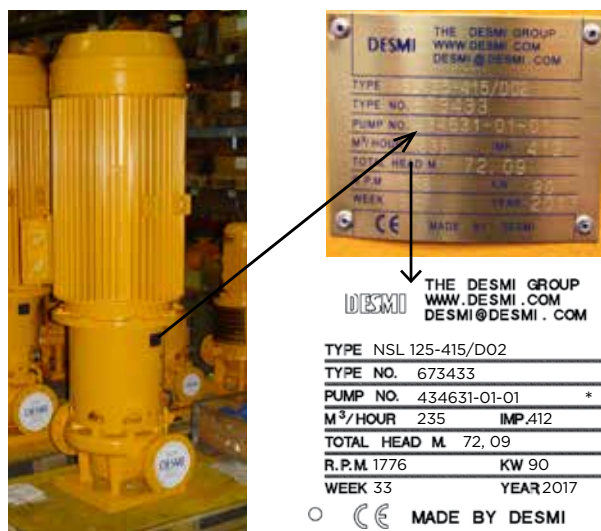
A DESMI pump is always provided with a name plate for identification.

The name plate can be a sticker or a metal name plate.

Please state pump type and pump No. (serial No.) when ordering spare parts or Spare Parts Kits

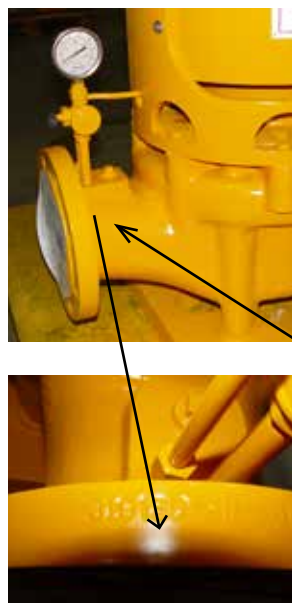


\* Pump no. (Serial no.)



\* Pump no. (Serial no.)

Pump no. (serial no.) is punched into the flange of the pressure side.



# DESMI 48

## Fast Track Service





Do you need to replace any of your main pumps?

DESMI has replacement pumps for the following applications (but not limited to):

- SW cooling pump
- FW cooling pump
- Ballast pump
- Fire pump
- Bilge pump
- HVAC
- Fuel oil transfer
- Fuel feed and booster
- Lube oil



DESMI 48 is a fast track service concept which means that we can supply vertical in-line centrifugal pumps, horizontal self-priming pumps or internal gear pumps within two working days\* (or 48 hours).

See our website <http://www.desmi.com/products.aspx> for more information on products and videos.

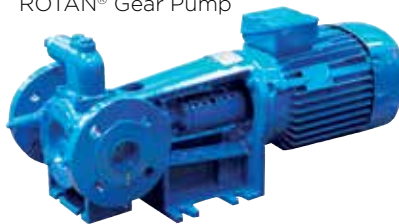
Please send your enquiry to [desmi@desmi.com](mailto:desmi@desmi.com) or contact us at  +45 96 32 81 11.



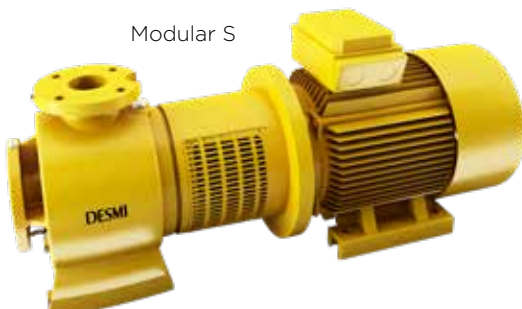
ESL



ROTAN® Gear Pump



Modular S



NSL

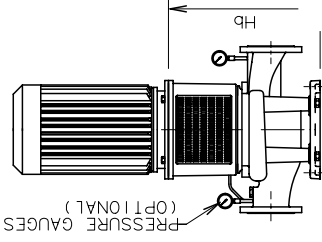


\* Add two working days for certification by major classification societies.

# List of NSL & ESL Centrifugal Pumps Available in Stock\*

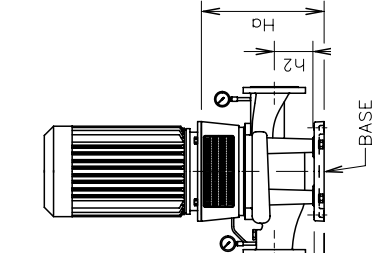
## NSL

With Bearing in Pump  
MONOBLOC -02

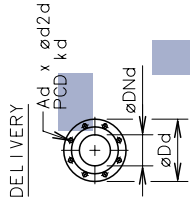


## ESL

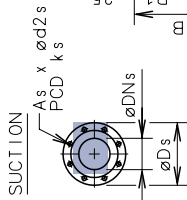
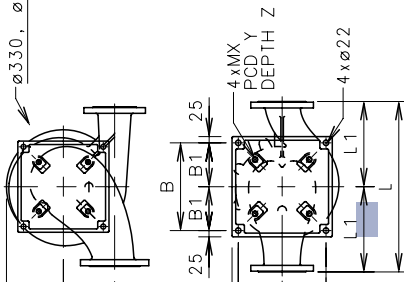
Compact Version  
MONOBLOC -12



115 & ø525



ø330, ø415 & ø525



PUMP TYPE	SUCTION-FLANGE			BASE PLATE/PUMP CASING							DELIVERY - FLANGE				WEIGHT <sub>p</sub>		CAPACITY RANGE 60 HZ										
	As	d2s	ks	Dns	Ds	B	B1	O	L	L1	W	h1	h2	H	Ad	d2d	kd	Dnd	Dd	A12/D12	A02/DO2	Min.	Max.	Min.	Max.	Min.	Max.
NSL 80-215	8	18	160	80	200	350	175	0	530	265	163	200	155	567	8	18	160	80	200	-	126/141	15	9	100	7		
NSL 80-265	8	18	160	80	200	350	175	0	580	290	193	200	155	574	8	18	160	80	200	-	135/152	20	14	140	9.3		
NSL 80-330	8	18	180	100	235	350	175	200	600	300	250	260	215	738	8	18	160	80	200	-	256/261	35	17	160	7.5		
NSL 100-215	8	18	180	100	220	350	175	0	580	290	181	200	155	587	8	18	180	100	220	-	137/154	50	9	185	6		
NSL 100-265	8	18	180	100	220	350	175	0	630	315	193	200	155	593	8	18	180	100	220	-	136/153	60	13	190	9		
NSL 100-330	8	18	210	125	270	350	175	210	650	325	250	260	215	743	8	18	180	100	235	-	261/267	80	6	200	3.3		
NSL 100-415	8	18	210	125	270	500	250	250	700	350	275	260	215	761	8	18	180	100	235	-	379/399	85	8.5	210	5		
NSL 125-215	8	18	210	125	250	350	175	0	630	315	203	200	155	600	8	18	210	125	250	-	148/163	80	8.5	280	6.8		
NSL 125-265	8	18	210	125	250	350	175	0	680	340	227	200	155	617	8	18	210	125	250	-	154/175	90	10	300	8		
NSL 125-330	8	22	240	150	300	350	175	225	700	350	250	300	255	788	8	18	210	125	270	-	276/282	100	5	300	3.8		
NSL 125-415	8	22	240	150	300	500	250	260	750	375	278	300	255	799	8	18	210	125	270	-	414/434	100	8.5	320	5		
NSL 150-215	8	22	240	150	285	350	175	0	680	340	239	230	185	636	8	22	240	150	285	-	167/191	50	2.2	270	1.1		
NSL 150-265	8	22	240	150	285	350	175	0	730	365	250	200	155	640	8	22	240	150	285	-	172/197	100	3.4	380	1.8		
NSL 150-330	8	22	295	200	360	500	250	235	750	375	275	300	255	799	8	22	240	150	300	-	339/329	130	5.5	530	3		
NSL 150-415	8	22	295	200	360	500	250	275	800	400	293	340	295	845	8	22	240	150	300	-	454/474	160	8.6	560	5		
NSL 200-265	8	23	295	200	340	350	175	0	780	390	290	260	215	681	8	23	295	200	340	-	207/240	150	3	450	1.8		
NSL 200-330	12	22	350	250	425	500	250	260	900	450	301	340	295	842	8	22	295	200	360	-	409/394	200	5	720	3		
NSL 250-265	12	22	350	250	405	350	175	0	800	400	324	260	215	727	12	22	350	250	405	-	301/341	200	3.2	600	2.2		
ESL 25-180	4	14	85	68	115	159	79.5	0	300	150	125	100	-	254	4	14	85	68	115	-	30/32	2	5.9	11	4.9		
ESL 40-180	4	18	110	88	150	159	79.5	0	350	175	127	120	-	315	4	18	110	90	150	-	37/40	8	5.8	54	4.2		
ESL 50-180	4	18	125	102	165	170	85	0	400	200	150	105	-	290	4	18	125	102	165	-	41/44	15	5.6	85	4.2		
ESL 80-180	8	18	160	138	200	220	110	0	480	240	175	136	-	351	8	18	160	138	200	-	60/62	30	5.3	115	4.1		

\* Subject for being unsold

# AFTER SALES SERVICE



# THE DESMI GROUP - ONE GLOBAL COMPANY

## DESMI offices:

### Africa

DESMI Africa Ltd.  
Tel.: +255 757597827

### Canada

DESMI Inc.  
Tel.: +1 905 321 3471

### China

DESMI Pumping Technology (Suzhou) Co., Ltd.  
Tel.: +86 512 6274 0400

DESMI Pumping Technology (Suzhou) Co., Ltd.  
Shanghai Liaison Office  
Tel.: +86 21 6071 06 00-05, 6071 06 07-13

DESMI Pumping Technology (Suzhou) Co., Ltd.  
Tianjin Liaison Office  
Tel.: +86 22 2317 0467

DESMI Pumping Technology (Suzhou) Co., Ltd.  
Guangzhou Liaison Office  
Tel.: +86 20 2831 3973

DESMI Pumping Technology (Suzhou) Co., Ltd.  
Chongqing Liaison Office  
Tel.: +86 23 8823 3518

DESMI Pumping Technology (Xuancheng)  
Co., Ltd.  
Tel.: +86 563 2612 570

### Denmark

DESMI A/S - Group Head Quarter  
Tagholm 1  
DK-9400 Nørresundby  
Tel.: +45 96 32 81 11

DESMI Pumping Technology A/S  
Tel.: +45 96 32 81 11

DESMI Danmark A/S  
Tel.: +45 72 44 02 50

DESMI Contracting A/S  
Tel.: +45 96 32 81 11

DESMI Ro-Clean A/S  
Tel.: +45 65 48 16 10

DESMI Ocean Guard A/S  
Tel.: +45 96 32 81 99

### Ecuador

DESMI Latinoamerica S.A.  
Tel.: +593 2 326 1939

### France

DESMI SARL  
Tel.: +33 130 439 710

### Germany

DESMI GmbH  
Tel.: +49 407 519847

### Greece

DESMI Greece  
Tel.: +30 214 111 893

### India

DESMI India LLP  
Tel.: +91-99 4933 9054

### Indonesia

DESMI Ro-Clean APAC  
Tel.: +62 21 570 7577

### Korea

DESMI Korea  
Tel.: +82 51 723 8801

### Netherlands

DESMI B.V.  
Tel.: +31 30 261 00 24

### Norway

DESMI Norge AS  
Tel.: +47 38 12 21 80

### Peru

DESMI PERÚ  
Tel.: +51 980 306 227

### Poland

DESMI Sp. z o.o.  
Tel.: +48 22 676 91 16

### Singapore

DESMI Singapore Pte Ltd.  
Tel.: +65 62 50 71 77

### Sweden

DESMI Sweden  
Tel.: +46 31 304 51 30

### UAE

DESMI Pumping Technology A/S (Br)  
Dubai Office  
Tel.: +971 4 501 5530

Abu Dhabi Office  
Tel.: +971 50-821 4979

### U.K.

DESMI Ltd.  
Tel.: +44 1782 566900

DESMI FHS Ltd.  
Tel.: +44 1782 566900

### USA

DESMI Inc.  
Tel.: +1 757 857 7041

- DESMI companies
- DESMI dealers/agents
- DESMI main distribution centers for Genuine Spare Parts Kits

Need more information or specifications? Contact us at [desmi@desmi.com](mailto:desmi@desmi.com) or read more about DESMI and DESMI's other products and solutions at [www.desmi.com/aftersales](http://www.desmi.com/aftersales)